

# Response of glaciers in Iceland to climate changes

<sup>1</sup>Tómas Jóhannesson (tj@vedur.is), <sup>2</sup>Sverrir Guðmundsson, <sup>3</sup>Guðfinna Aðalgeirsdóttir, <sup>2</sup>Helgi Björnsson, <sup>2</sup>Finnur Pálsson, <sup>1</sup>Oddur Sigurðsson, <sup>1</sup>Thorsteinn Thorsteinsson

<sup>1</sup>Icelandic Meteorological Office; <sup>2</sup>Institute of Earth Sciences, University of Iceland; <sup>3</sup>Danish Meteorological Institute



Future climate change is likely to have pronounced effects on glaciers, glacial rivers and hydro-resources of Iceland. Icelandic glaciers store a total of 3600 km<sup>3</sup> of ice and are retreating and thinning rapidly at present.

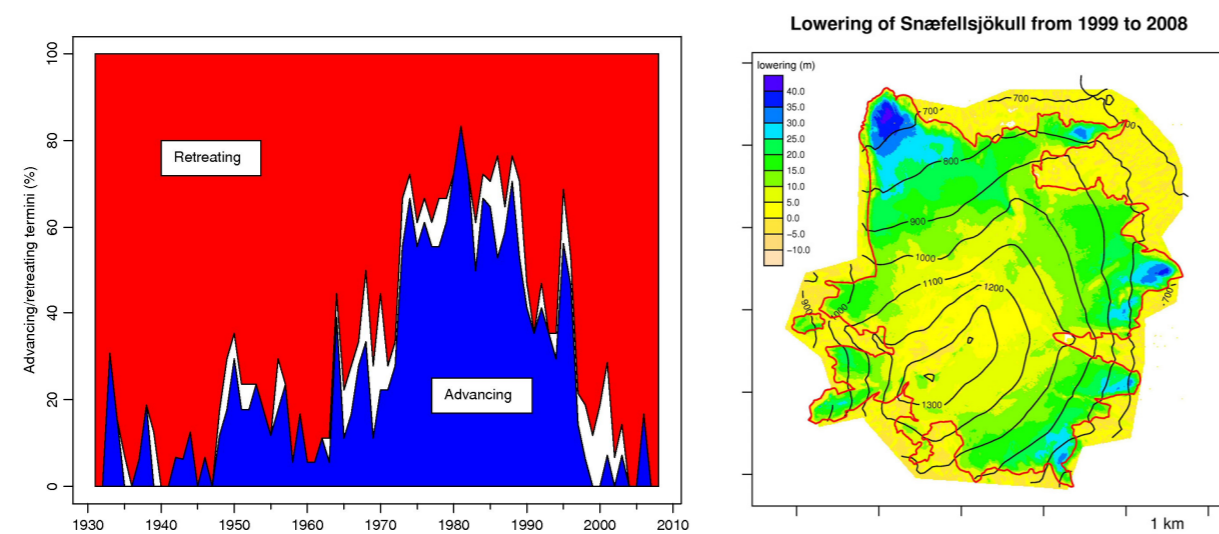


Figure 1: *Left*: Percentage of advancing and retreating termini of non-surging glaciers in Iceland from 1930/1931 to 2007/2008. Over most of the time period shown, the figure is based on measurements at 11 to 19 locations (somewhat fewer termini in the years 1931 and 1932). *Right*: Lowering of the Snæfellsjökull ice cap (area 12.5 km<sup>2</sup> in 2000) from 1999 to 2008.

The downwasting of the glaciers is projected to intensify during the coming decades, leading to their almost complete disappearance in the next 150–200 years. The response of the main ice caps of Iceland, Langjökull, Hofsjökull and Vatnajökull to climate warming was simulated with a coupled mass-balance/dynamical model as a part of the CES project. A mean warming of 2.5–3°C between 1961–1990 and 2071–2100 was assumed with the greatest warming in the spring and fall. Precipitation changes are comparatively small, with up to 10–20% average increase in the fall between these periods but little change in other seasons. The simulations are started from 1990.

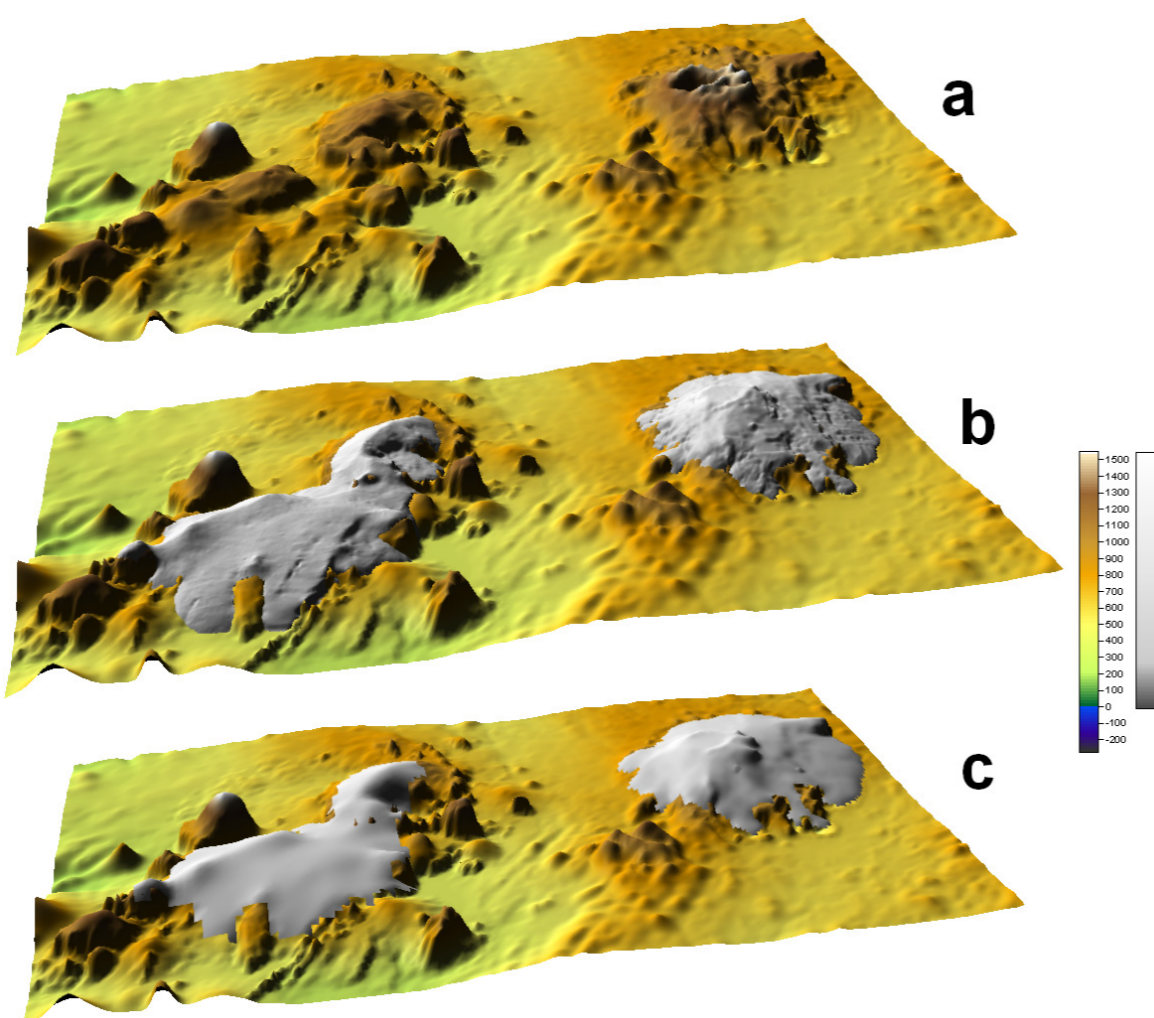


Figure 2: a) Measured bedrock of Langjökull and Hofsjökull ice caps. b) Measured 1997 and 1999 ice surfaces of Langjökull and Hofsjökull, respectively. c) Steady-state glacier geometries after a few hundred year spin-up with constant mass balance forcing.

The simulated rate of retreat is similar for Hofsjökull and Vatnajökull, but much faster for the lower and thinner Langjökull (Figure 3). Langjökull loses 35% of its initial volume after 50 model years when 75% of the volume is left for Vatnajökull and Hofsjökull (Figure 4). Langjökull is predicted to disappear after 150 model years and only the highest peaks of Hofsjökull and Vatnajökull survive more than 200 years.

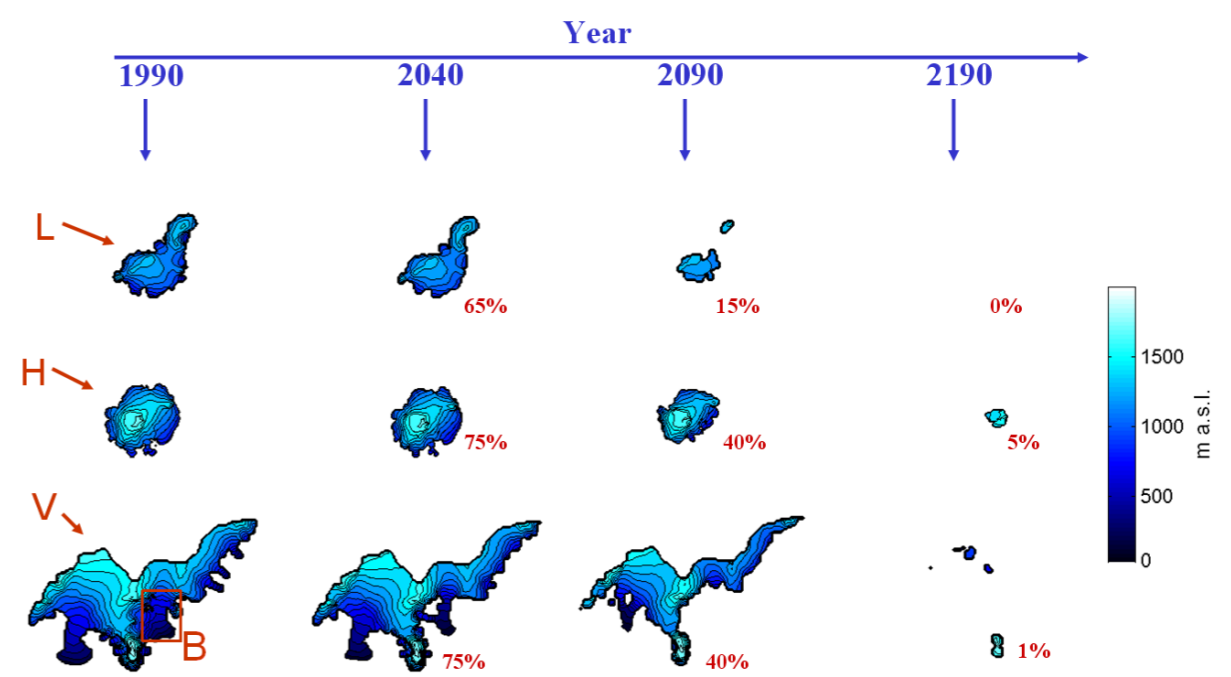


Figure 3: Simulated response of Langjökull (L), Hofsjökull (H) and southern Vatnajökull (V) to climate change. The inset numbers are projected volumes relative to the initial stable ice geometries shown for the year 1990. Note that the figure shows only the southern part of the Vatnajökull ice cap, south of the main east-west ice divide.

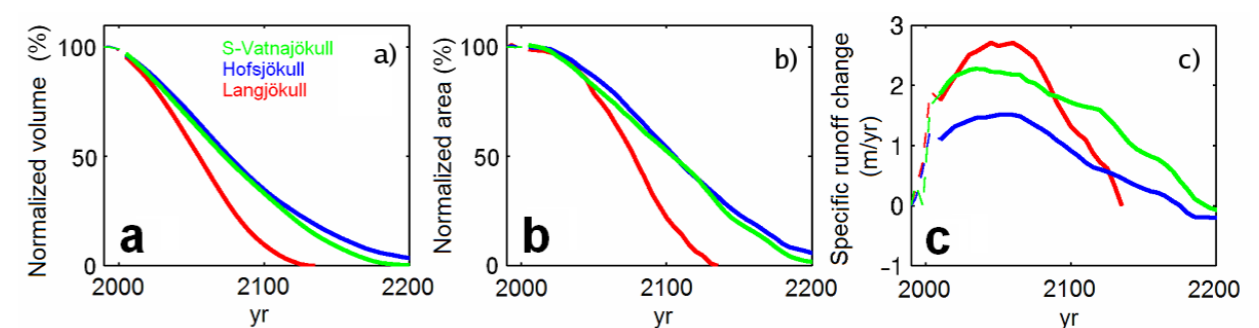


Figure 4: Volume and area reduction, normalised to present day values and area-averaged runoff change. The runoff is always from the present day ice-covered areas and consists of both glacier melting and precipitation. The enhanced glacier melting is the dominant contribution to the runoff change to begin with.

Subglacial water courses and outlet locations of many glacial rivers are likely to change due to the thinning of ice caps and the retreat of glacier margins. River runoff is projected to increase by 25% between 1961–1990 and 2071–2100, mainly due to increased melting of glaciers. Runoff seasonality and flood characteristics are projected to change such that there will in general be more autumn and winter runoff, and spring floods will be earlier and most likely smaller in amplitude. A substantial temporary increase in hydropower potential is projected for more than 100 years. The changes in runoff, discharge seasonality and water courses imply modifications in design assumptions and changes in the operating environment of hydropower plants and other hydrological infrastructure such as bridges and roads.

## Acknowledgements

This study was carried out as a part of the projects Climate and Energy System (CES), financed by Nordic Energy Research, and Veður og orka (VO) funded by the National Power Company of Iceland, the National Energy Fund of Iceland, the Ministry of Industry and the National Energy Authority.

## References

- Jóhannesson, T., G. Aðalgeirsdóttir, H. Björnsson, P. Crochet, E. B. Elíasson, S. Guðmundsson, J. F. Jónsdóttir, H. Ólafsson, F. Pálsson, Ó. Rögnvaldsson, O. Sigurðsson, Á. Snorrason, Ó. G. Blöndal Sveinsson and Th. Thorsteinsson. 2007. *Effect of climate change on hydrology and hydro-resources in Iceland*. Reykjavík, National Energy Authority, Rep. OS-2007/011.
- Fenger, J., ed. (2007) *Impacts of Climate Change on Renewable Energy Sources. Their role in the Nordic energy System*. A comprehensive report resulting from a Nordic Energy Research project. Nord 2007:003, Nordic Council of Ministers, Copenhagen, 190 pp.



Hofsjökull



Langjökull

Photos: Oddur Sigurðsson