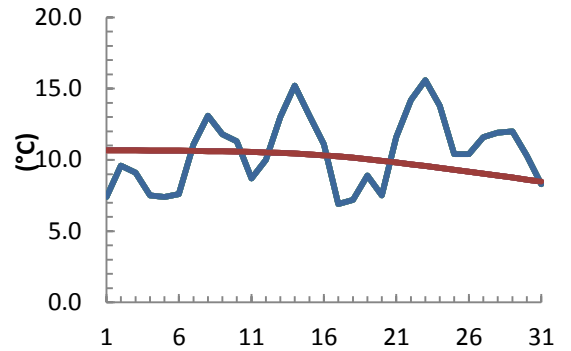


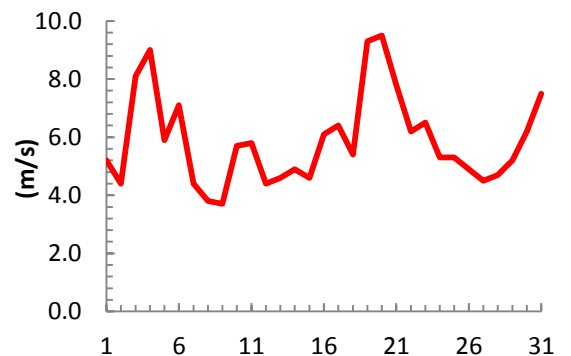
dagur	meðalhiti (°C)	Hámark (°C)	Lágmark (°C)	Úrkoma (mm)	Úrkomutegund	Snjódýpt (cm)	Snjóhúla (0-4)	Sólskin (klst)	Meðalvindur (m/s)	Mesti vindur (m/s)	Hviða (m/s)
1	7.4	10.7	3.2			0	0	0.0	1.4	5.2	9.6
2	9.6	13.4	7.0	0.0		0	0	0.0	1.2	4.4	7.0
3	9.1	10.8	9.0	1.4	ri	0	0	0.0	5.3	8.1	13.5
4	7.5	10.3	6.9	1.7	ri	0	0	1.5	6.0	9.0	13.4
5	7.4	9.4	6.0			0	0	2.8	4.4	5.9	10.5
6	7.6	9.8	5.2	0.0		0	0	10.8	3.0	7.1	10.2
7	11.1	17.6	2.9			0	0	7.4	1.6	4.4	8.6
8	13.1	18.4	9.0			0	0	4.9	1.7	3.8	8.3
9	11.8	18.1	10.4	0.4	ri	0	0	0.0	1.5	3.7	8.1
10	11.3	14.5	9.1	1.8	ri	0	0	0.0	2.4	5.7	8.1
11	8.7	12.5	8.1	0.7	ri	0	0	2.8	3.4	5.8	8.6
12	10.0	16.0	2.4	0.3	ri	0	0	14.4	1.8	4.4	6.4
13	13.0	18.1	5.6			0	0	5.7	1.8	4.6	9.3
14	15.2	18.4	12.1			0	0	1.1	2.8	4.9	10.2
15	13.1	17.9	11.4	1.4	ri	0	0	0.0	2.4	4.6	8.5
16	11.1	15.5	10.4	0.4	ri	0	0	2.9	2.8	6.1	8.9
17	6.9	11.6	6.2	3.2	ri	0	0	0.0	4.0	6.4	9.4
18	7.2	11.2	3.6			0	0	5.9	1.9	5.4	7.6
19	8.9	14.6	6.7	0.5	ri	0	0	10.2	3.1	9.3	14.2
20	7.5	11.4	5.9	0.0		0	0	2.3	4.2	9.5	17.9
21	11.6	14.8	4.2	0.0		0	0	0.2	3.8	7.8	13.9
22	14.2	16.0	13.1	0.0		0	0	0.2	3.7	6.2	13.2
23	15.6	18.6	11.4			0	0	1.1	4.0	6.5	13.7
24	13.8	18.5	11.4	0.1	ri	0	0	0.2	3.4	5.3	9.5
25	10.4	16.0	7.9	0.0		0	0	0.0	2.5	5.3	9.3
26	10.4	16.0	4.3	2.5	ri	0	0	4.5	1.9	4.9	10.2
27	11.6	15.2	8.6	0.0		0	0	8.8	2.2	4.5	8.2
28	11.9	16.3	8.6			0	0	5.5	2.0	4.7	8.3
29	12.0	15.9	9.3			0	0	1.6	2.6	5.2	10.2
30	10.3	14.0	9.4	0.5	ri	0	0	0.1	2.3	6.2	11.3
31	8.3	10.6	6.0	3.9	ri	0	0	5.0	3.2	7.5	15.8

Meðalhiti (°C)	10.6
Frávik frá meðaltali 1961 - 1990 (°C)	0.6
Meðalhámarkshiti (°C)	14.6
Meðallágmarkshiti (°C)	7.6
Úrkomumagn (mm)	18.8
Hlutfall úrkomu af meðaltali 1961-1990 (%)	55.1
Meðalvindhraði (m/s)	2.8
Sólskinsstundir (klst)	99.9

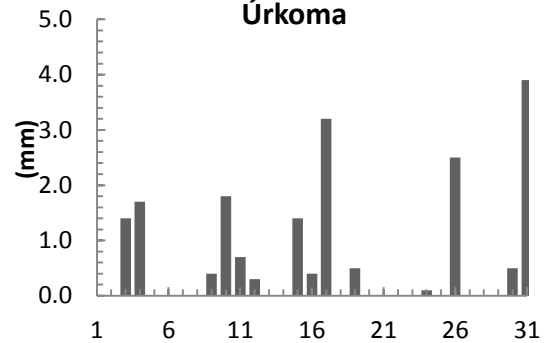
### Meðalhiti



### Mesti vindur



### Úrkoma



### Sólskin

