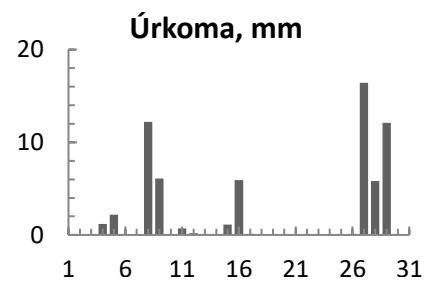
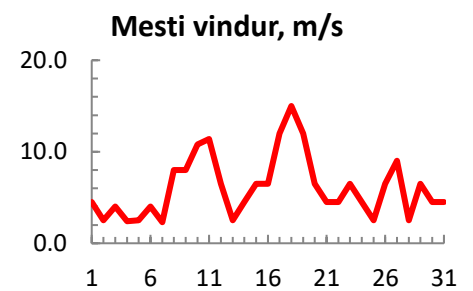
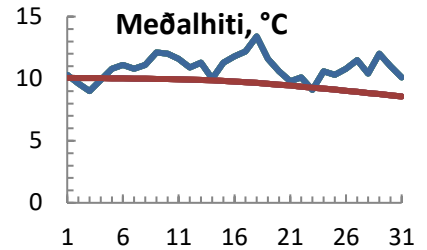


dagur	meðalhiti (°C)	Hámark (°C)	Lágmark (°C)	Úrkoma (mm)	Úrkomutegund	Snjódýpt (cm)	Snjóhula (0-4)	Sólskin (klst)	Meðalvindur (m/s)	Mesti vindur (m/s)	Hviða (m/s)
1	10.3	13.5	7.8	0.0		0	0		2.0	4.5	
2	9.6	11.5	8.3	0.0		0	0		1.2	2.5	
3	9.0	10.5	8.3	0.0		0	0		1.9	4.0	
4	9.9	13.0	7.7	1.2	ri	0	0		0.7	2.4	
5	10.8	14.0	7.0	2.2	ri	0	0		1.8	2.5	
6	11.1	15.5	8.3	0.0		0	0		1.8	4.0	
7	10.8	14.5	8.8			0	0		0.7	2.3	
8	11.1	13.0	9.3	12.2	ri	0	0		4.3	8.0	
9	12.1	16.5	8.6	6.1	ri	0	0		2.7	8.0	
10	12.0	16.5	9.3			0	0		4.4	10.8	
11	11.6	14.3	9.2	0.7	ri	0	0		6.2	11.4	
12	10.9	13.8	7.0	0.2	ri	0	0		2.4	6.5	
13	11.3	14.2	8.4			0	0		1.3	2.5	
14	10.0	14.0	6.4			0	0		2.1	4.5	
15	11.3	15.4	7.6	1.1	ri	0	0		2.9	6.5	
16	11.8	15.8	9.4	5.9	ri	0	0		3.6	6.5	
17	12.2	14.5	9.4	0.1	ri	0	0		7.1	12.0	
18	13.4	16.0	11.2			0	0		9.3	15.0	
19	11.6	14.6	9.4			0	0		8.1	12.0	
20	10.6	14.2	7.3			0	0		2.7	6.5	
21	9.8	13.0	6.0			0	0		2.4	4.5	
22	10.1	14.0	5.6			0	0		2.6	4.5	
23	9.1	13.8	5.2			0	0		3.9	6.5	
24	10.6	14.0	7.8			0	0		2.2	4.5	
25	10.3	12.6	8.8			0	0		2.0	2.5	
26	10.8	12.4	8.6	0.1	ri	0	0		3.8	6.5	
27	11.5	12.6	10.4	16.4	ri	0	0		4.7	9.0	
28	10.4	12.0	9.4	5.8	ri	0	0		1.1	2.5	
29	12.0	15.8	9.3	12.1	ri	0	0		5.2	6.5	
30	11.0	14.6	6.0			0	0		1.7	4.5	
31	10.1	14.5	6.0			0	0		1.8	4.5	



Meðalhiti (°C)	10.9
Frávik frá meðaltali 1961 - 1990 (°C)	0.7
Meðalhámarkshiti (°C)	14.0
Meðallágmarkshiti (°C)	8.1
Úrkomumagn (mm)	64.1
Hlutfall úrkomu af meðaltali 1961-1990 (%)	57.1
Meðalvindhraði (m/s)	3.2