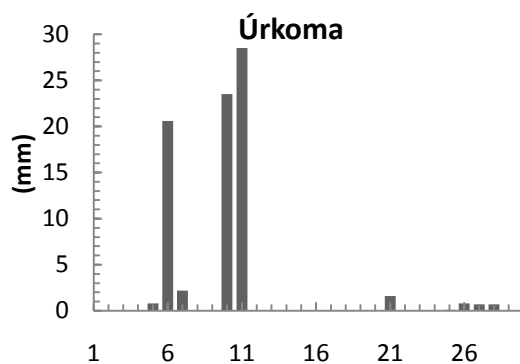
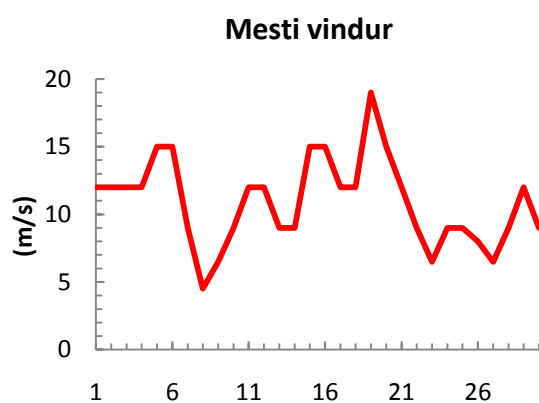
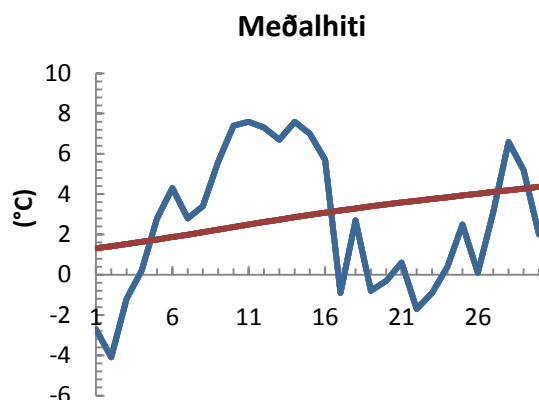


dagur	meðalhiti (°C)	Hámark (°C)	Lágmark (°C)	Úrkoma (mm)	Úrkomutegund	Snjódýpt (cm)	Snjóhula (0-4)	Sólskin (klst)	Meðalvindur (m/s)	Mesti vindur (m/s)	Hviða (m/s)
1	-2.7	2.0	-5.6			2	2		8.8	12.0	
2	-4.1	0.0	-6.2			1	2		8.7	12.0	
3	-1.2	2.1	-6.9			1	2		2.1	12.0	
4	0.2	5.0	-5.9			1	2		4.0	12.0	
5	2.8	6.7	-0.9	0.8	ri	0	2		10.6	15.0	
6	4.3	7.4	1.4	20.6	ri	0	0		6.9	15.0	
7	2.8	7.0	1.3	2.2	ri	0	0		5.1	9.0	
8	3.4	8.2	-1.5	0.0		0	0		2.4	4.5	
9	5.6	8.4	1.4	0.0		0	0		4.1	6.5	
10	7.4	8.2	5.1	23.5	ri	0	0		6.2	9.0	
11	7.6	9.6	5.7	28.5	ri	0	0		9.1	12.0	
12	7.3	11.4	4.1	0.0		0	0		3.9	12.0	
13	6.7	10.4	2.1			0	0		6.2	9.0	
14	7.6	11.4	4.1			0	0		4.2	9.0	
15	7.0	11.3	4.5			0	0		7.9	15.0	
16	5.7	9.9	5.2			0	0		8.8	15.0	
17	-0.9	6.9	-3.8			0	0		8.8	12.0	
18	2.7	7.6	-3.3			0	0		3.6	12.0	
19	-0.8	8.0	-1.8			0	0		15.0	19.0	
20	-0.3	2.6	-4.0			0	0		5.9	15.0	
21	0.6	4.6	-1.3	1.6	sn	0	0		7.4	12.0	
22	-1.7	4.1	-4.4			0	0		4.9	9.0	
23	-0.9	2.7	-6.9			0	0		3.8	6.5	
24	0.4	3.5	-3.1			0	0		5.8	9.0	
25	2.5	5.0	-0.5	0.1	sl	0	0		3.6	9.0	
26	0.1	5.5	-0.8	0.8	sl	0	0		5.7	8.0	
27	3.1	5.6	-1.3	0.7	ri	0	0		4.6	6.5	
28	6.6	8.7	4.1	0.7	ri	0	0		8.4	9.0	
29	5.2	8.4	5.0	0.0		0	0		8.9	12.0	
30	2.0	6.0	-0.6			0	0		5.9	9.0	



Meðalhiti (°C)	2.6
Frávik frá meðaltali 1961 - 1990 (°C)	
Meðalhámarkshiti (°C)	6.6
Meðallágmarkshiti (°C)	-0.5
Úrkomumagn (mm)	79.5
Hlutfall úrkomu af meðaltali 1961-1990 (%)	93.7
Meðalvindhraði (m/s)	6.4

