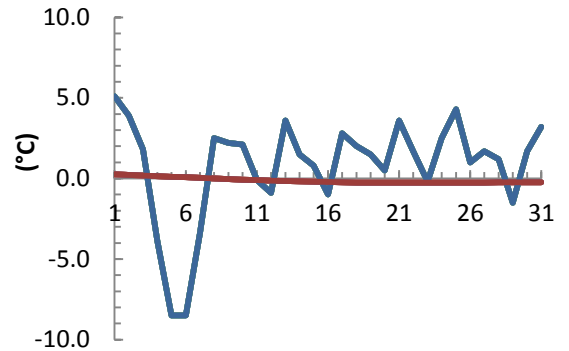


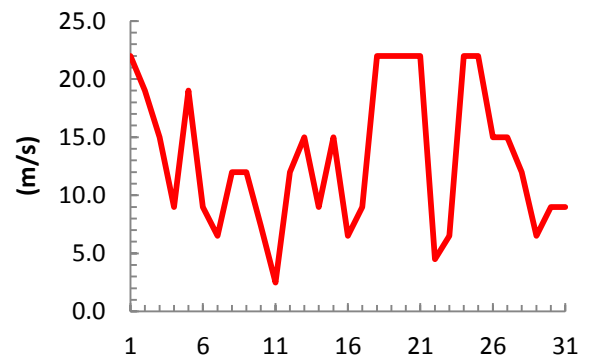
dagur	meðalhiti (°C)	Hámark (°C)	Lágmark (°C)	Úrkoma (mm)	Úrkomutegund	Snjódýpt (cm)	Snjóhula (0-4)	Sólskin (klst)	Meðalvindur (m/s)	Mesti vindur (m/s)	Hviða (m/s)
1	5.1	7.8	0.2			0	0		10.5	22.0	
2	3.9	8.2	0.5	1.6	ri	0	0		9.8	19.0	
3	1.8	4.0	-2.6	0.1	sn	0	0		10.6	15.0	
4	-3.9	3.5	-5.6			0	0		6.1	9.0	
5	-8.5	-3.8	-8.9			0	0		10.2	19.0	
6	-8.5	-8.2	-9.6			0	0		5.3	9.0	
7	-3.4	-1.6	-8.5	0.1	sn	0	2		5.5	6.5	
8	2.5	4.4	-3.3	7.2	sl	5	4		6.1	12.0	
9	2.2	4.4	0.9	9.9	ri	0	0		2.8	12.0	
10	2.1	2.5	0.7	5.2	ri	0	0		1.7	7.4	
11	-0.1	3.8	-1.6	0.4	sl	0	0		1.2	2.5	
12	-0.9	0.6	-3.5			0	0		3.9	12.0	
13	3.6	6.5	0.3	21.6	sl	0	0		6.5	15.0	
14	1.5	7.0	0.1	21.9	ri	0	0		4.4	9.0	
15	0.8	3.0	-1.3	0.1	ri	0	0		5.3	15.0	
16	-1.0	1.6	-2.6	0.6	sn	2	4		2.6	6.5	
17	2.8	4.5	-3.5	4.0	sl	8	4		5.9	9.0	
18	2.0	6.8	0.1	19.5	sl	0	0		8.6	22.0	
19	1.5	3.0	-2.3	1.3	sl	2	4		13.6	22.0	
20	0.5	2.5	-3.5	0.2	sn	1	4		7.6	22.0	
21	3.6	5.0	1.5	30.1	sl	0	0		3.8	22.0	
22	1.7	4.0	-0.1	11.2	ri	0	0		0.4	4.5	
23	-0.2	3.2	-2.5	0.2	ri	0	0		2.1	6.5	
24	2.5	4.0	-0.3	0.8	sn	1	4		13.5	22.0	
25	4.3	5.5	2.4			0	0		16.6	22.0	
26	1.0	5.5	-0.7			0	0		8.9	15.0	
27	1.7	3.6	-0.9			0	0		10.5	15.0	
28	1.2	5.4	-0.6			0	0		8.4	12.0	
29	-1.5	0.6	-3.5			0	0		4.2	6.5	
30	1.7	3.6	-1.3	6.2	sl	4	4		4.2	9.0	
31	3.2	5.2	0.3	8.9	ri	0	2		4.6	9.0	

Meðalhiti (°C)	0.8
Frávik frá meðaltali 1961 - 1990 (°C)	0.4
Meðalhámarkshiti (°C)	3.4
Meðallágmarkshiti (°C)	-1.9
Úrkomumagn (mm)	151.1
Hlutfall úrkomu af meðaltali 1961-1990 (%)	127.7
Meðalvindhraði (m/s)	6.6

Meðalhiti



Mesti vindur



Úrkoma

