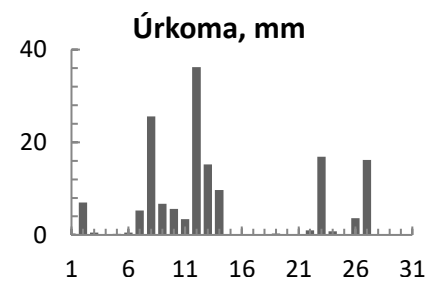
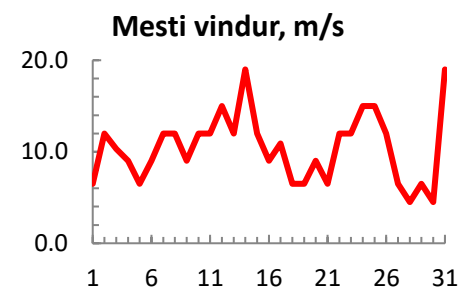
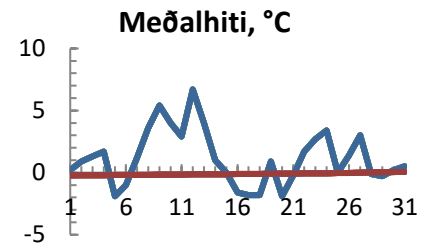


dagur	meðalhiti (°C)	Hámark (°C)	Lágmark (°C)	Úrkoma (mm)	Úrkomutegund	Snjódýpt (cm)	Snjöhula (0-4)	Sólskin (klst)	Meðalvindur (m/s)	Mesti vindur (m/s)	Hviða (m/s)
1	0.2	2.0	-3.3	0.3	sn	0	0		2.6	6.5	
2	0.9	1.8	-2.8	7.0	sn	7	0		9.1	12.0	
3	1.3	2.2	0.1	0.5	sn	8	0		5.1	10.3	
4	1.7	2.2	-0.3	0.1	sn	7	0		6.4	9.0	
5	-1.9	2.0	-2.8	0.2	sn	7	0		3.2	6.5	
6	-1.0	3.2	-6.1	0.5	sn	7	0		4.8	9.0	
7	1.2	3.6	-2.8	5.3	sl	7	0		5.3	12.0	
8	3.6	5.4	2.3	25.6	sl	0	0		4.1	12.0	
9	5.4	5.6	2.9	6.7	ri	0	0		8.4	9.0	
10	4.0	7.0	2.1	5.6	ri	0	0		5.2	12.0	
11	2.9	4.6	0.1	3.4	ri	0	0		5.0	12.0	
12	6.7	7.4	4.3	36.2	ri	0	0		12.3	15.0	
13	4.0	7.6	3.3	15.2	ri	0	0		8.2	12.0	
14	1.0	5.4	-1.1	9.7	ri	0	0		13.6	19.0	
15	0.0	1.4	-1.9	0.1	sn	0	0		7.6	12.0	
16	-1.6	1.0	-4.7	0.1	sn	0	0		6.4	9.0	
17	-1.8	0.5	-3.5			0	0		5.0	10.9	
18	-1.8	-0.8	-3.6			0	0		4.0	6.5	
19	0.9	1.4	-1.1	0.3	sn	0	0		4.5	6.5	
20	-1.9	1.5	-3.3			0	0		4.8	9.0	
21	-0.2	1.2	-4.1	0.1	sn	0	0		4.8	6.5	
22	1.7	2.4	0.1	1.0	sn	0	0		6.6	12.0	
23	2.7	3.6	1.3	16.9	sl	0	0		6.4	12.0	
24	3.4	4.4	2.1	0.8	sl	0	0		10.8	15.0	
25	0.0	3.6	-2.6			0	0		6.6	15.0	
26	1.4	4.0	-2.6	3.6	sn	10	0		6.7	12.0	
27	3.0	5.2	2.1	16.2	sl	0	0		2.8	6.5	
28	-0.1	3.0	-1.5	0.1	ri	0	0		1.8	4.5	
29	-0.3	2.8	-2.6			0	0		3.4	6.5	
30	0.2	1.8	-2.8			0	0		3.4	4.5	
31	0.5	2.2	-1.1			0	0		13.9	19.0	



Meðalhiti (°C)	1.2
Frávik frá meðaltali 1961 - 1990 (°C)	1.1
Meðalhámarkshiti (°C)	3.2
Meðallágmarkshiti (°C)	-1.1
Úrkomumagn (mm)	155.5
Hlutfall úrkomu af meðaltali 1961-1990 (%)	118.3
Meðalvindhraði (m/s)	6.2



