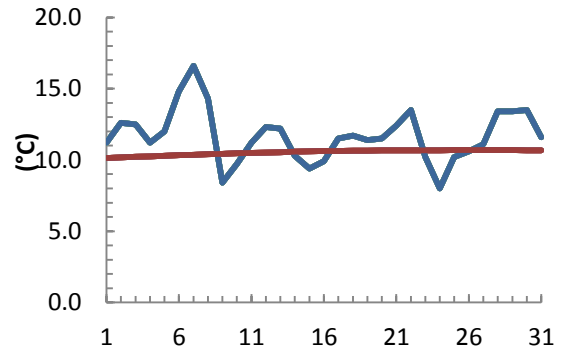


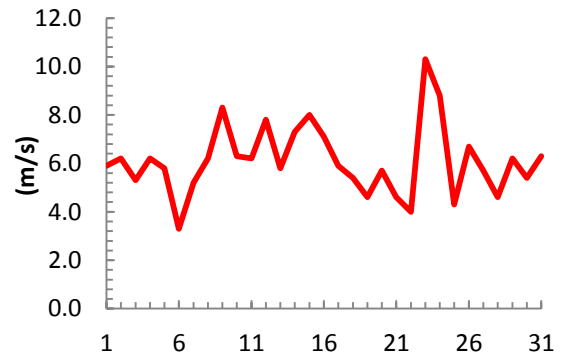
dagur	meðalhiti (°C)	Hámark (°C)	Lágmark (°C)	Úrkoma (mm)	Úrkomutegund	Snjódýpt (cm)	Snjóhúla (0-4)	Sólskin (klst)	Meðalvindur (m/s)	Mesti vindur (m/s)	Hviða (m/s)
1	11.2	16.1	4.5			0	0	12.6	2.7	5.9	9.1
2	12.6	17.5	8.9			0	0	7.6	2.1	6.2	9.1
3	12.5	14.6	10.1	0.0		0	0	2.6	1.6	5.3	7.1
4	11.2	15.1	8.6	1.2	ri	0	0	6.7	2.3	6.2	9.1
5	12.0	16.5	4.2	0.0		0	0	17.0	2.7	5.8	8.1
6	14.8	17.5	11.4			0	0	0.3	1.1	3.3	5.7
7	16.6	20.0	13.1			0	0	3.4	3.1	5.2	10.0
8	14.3	19.5	13.5	0.0		0	0	1.4	3.1	6.2	10.4
9	8.4	18.8	7.4	2.1	ri	0	0	10.9	5.0	8.3	12.7
10	9.7	13.5	4.5	0.3	ri	0	0	14.8	2.7	6.3	9.4
11	11.2	16.5	4.4			0	0	16.5	2.9	6.2	9.1
12	12.3	17.5	6.0			0	0	17.0	3.4	7.8	11.4
13	12.2	16.2	7.4			0	0	4.0	2.9	5.8	11.6
14	10.3	14.4	9.4			0	0	6.0	4.0	7.3	11.0
15	9.4	13.0	7.8			0	0	8.2	3.7	8.0	11.1
16	9.9	13.1	7.0			0	0	12.7	3.1	7.1	10.1
17	11.5	15.8	3.1			0	0	11.5	2.5	5.9	8.0
18	11.7	16.0	10.9			0	0	0.5	2.6	5.4	8.0
19	11.4	14.5	9.3	2.0	ri	0	0	1.3	2.1	4.6	7.2
20	11.5	13.9	10.2	4.2	ri	0	0	0.1	3.5	5.7	8.6
21	12.4	16.0	3.5	0.5	ri	0	0	0.9	1.6	4.6	9.6
22	13.5	17.1	11.1	0.8	ri	0	0	0.3	2.4	4.0	9.2
23	10.2	16.6	9.7	8.5	ri	0	0	0.0	6.0	10.3	14.9
24	8.0	10.2	7.0	4.8	ri	0	0	9.8	5.0	8.8	14.0
25	10.2	14.2	6.7			0	0	3.1	1.8	4.3	6.0
26	10.6	12.8	9.4	1.0	ri	0	0	3.5	3.6	6.7	10.3
27	11.1	15.2	7.4			0	0	13.6	3.3	5.7	9.7
28	13.4	19.9	5.1			0	0	16.5	1.7	4.6	6.8
29	13.4	19.3	7.2			0	0	10.2	2.8	6.2	9.6
30	13.5	19.8	6.2			0	0	13.4	2.0	5.4	8.1
31	11.6	19.8	7.8			0	0	11.0	3.4	6.3	9.1

Meðalhiti (°C)	11.7
Frávik frá meðaltali 1961 - 1990 (°C)	1.1
Meðalhámarkshiti (°C)	16.2
Meðallágmarkshiti (°C)	7.8
Úrkomumagn (mm)	25.4
Hlutfall úrkomu af meðaltali 1961-1990 (%)	77.0
Meðalvindhraði (m/s)	2.9
Sólskinsstundir (klst)	237.4

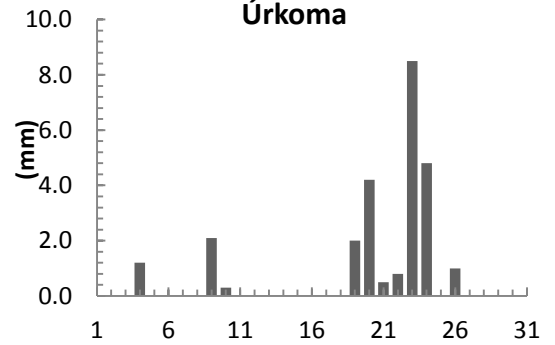
### Meðalhiti



### Mesti vindur



### Úrkoma



### Sólskin

