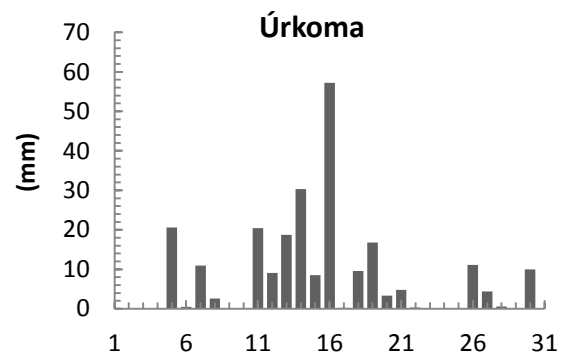
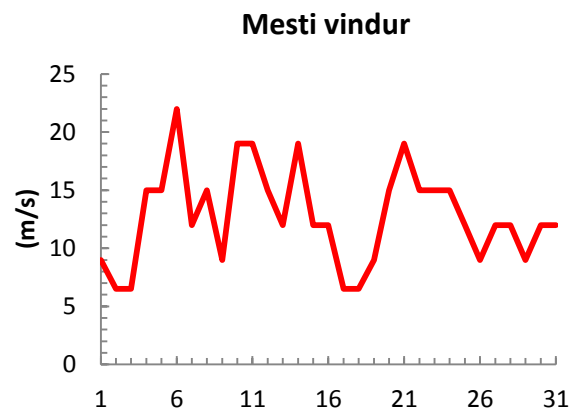
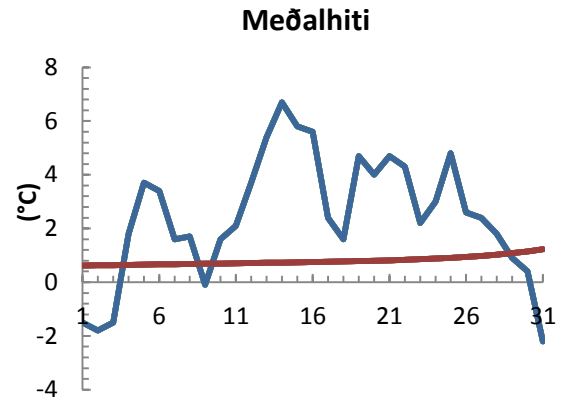


dagur	meðalhiti (°C)	Hámark (°C)	Lágmark (°C)	Úrkoma (mm)	Úrkomutegund	Snjódýpt (cm)	Snjóhula (0-4)	Sólskin (klst)	Meðalvindur (m/s)	Mesti vindur (m/s)	Hviða (m/s)
1	-1.5	1.5	-2.0	0.0		0	0		6.7	9.0	
2	-1.8	0.8	-3.0	0.0		0	0		4.1	6.5	
3	-1.5	1.0	-3.5	0.1	sn	0	0		5.0	6.5	
4	1.8	4.5	-2.6	0.0		0	0		6.7	15.0	
5	3.7	7.6	-1.9	20.6	ri	0	0		13.5	15.0	
6	3.4	6.0	2.3	0.5	ri	0	0		12.5	22.0	
7	1.6	4.0	0.4	10.9	ri	1	4		10.1	12.0	
8	1.7	3.2	-0.5	2.6	sn	3	4		10.9	15.0	
9	-0.1	2.0	-3.5	0.0		2	4		2.4	9.0	
10	1.6	4.0	-2.8	0.0		2	4		7.1	19.0	
11	2.1	6.8	1.1	20.4	sl	0	0		4.6	19.0	
12	3.7	6.2	-2.3	9.1	sl	0	0		8.8	15.0	
13	5.4	6.6	0.3	18.7	ri	0	0		10.1	12.0	
14	6.7	7.6	5.4	30.3	ri	0	0		11.5	19.0	
15	5.8	6.6	4.3	8.5	ri	0	0		8.1	12.0	
16	5.6	7.6	4.5	57.2	ri	0	0		8.6	12.0	
17	2.4	5.6	1.1	0.2	ri	0	0		1.9	6.5	
18	1.6	4.5	0.3	9.6	sl	4	4		3.3	6.5	
19	4.7	6.8	0.5	16.8	sl	0	0		3.2	9.0	
20	4.0	6.5	2.7	3.3	ri	0	0		7.5	15.0	
21	4.7	7.5	1.6	4.8	ri	0	0		9.3	19.0	
22	4.3	7.0	4.3	0.3	ri	0	0		4.0	15.0	
23	2.2	5.5	-0.3	0.0		0	0		7.8	15.0	
24	3.0	6.5	0.4	0.0		0	0		8.0	15.0	
25	4.8	6.0	2.3	0.0		0	0		6.9	12.0	
26	2.6	6.6	-0.9	11.1	ri	0	0		3.9	9.0	
27	2.4	4.2	0.4	4.4	sl	0	0		9.2	12.0	
28	1.8	4.4	-0.3	0.6	sl	0	0		4.9	12.0	
29	0.9	3.5	-2.1	0.0		0	0		5.2	9.0	
30	0.4	2.4	-0.1	10.0	sn	7	4		9.8	12.0	
31	-2.2	1.0	-3.1	0.0		0	2		7.4	12.0	



Meðalhiti (°C)	2.4
Frávik frá meðaltali 1961 - 1990 (°C)	1.3
Meðalhámarkshiti (°C)	5.0
Meðallágmarkshiti (°C)	0.1
Úrkomumagn (mm)	240.0
Hlutfall úrkomu af meðaltali 1961-1990 (%)	218.2
Meðalvindhraði (m/s)	7.2

