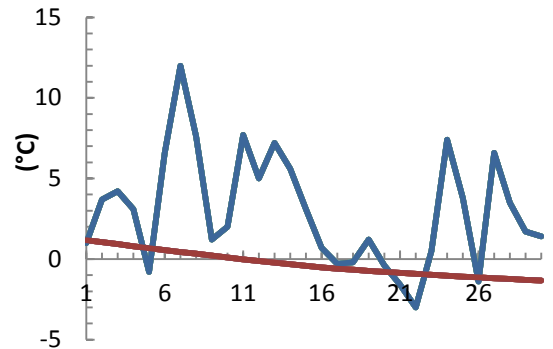


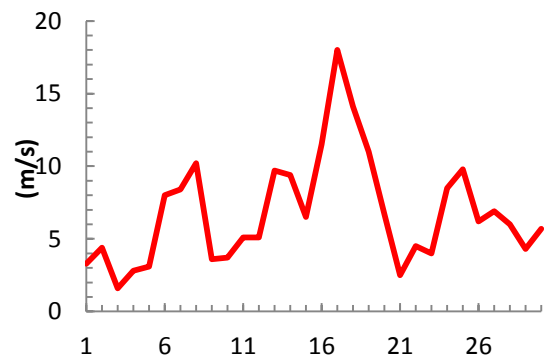
dagur	meðalhiti (°C)	Hámark (°C)	Lágmark (°C)	Úrkoma (mm)	Úrkomutegund	Snjódýpt (cm)	Snjóhula (0-4)	Sólskin (klst)	Meðalvindur (m/s)	Mesti vindur (m/s)	Hviða (m/s)
1	1.0	10.0	-1.0	0.0		0	0	2.6	1.2	3.3	5.7
2	3.7	7.0	-0.5	0.0		0	0	0.0	1.2	4.4	7.4
3	4.2	7.0	2.2	0.1	ri	0	0	0.0	0.4	1.6	2.4
4	3.1	7.0	2.4	2.1	ri	0	0	0.3	0.6	2.8	3.8
5	-0.8	2.4	-2.7	0.2	ri	0	0	4.2	0.9	3.1	5.6
6	6.6	9.1	-1.2	0.0		0	0	0.0	4.3	8.0	14.5
7	12.0	14.0	4.9	0.0		0	0	0.0	5.3	8.4	15.0
8	7.6	13.5	2.0	0.0		0	0	3.4	3.7	10.2	17.3
9	1.2	6.4	-1.0	0.0		0	0	0.9	1.7	3.6	6.5
10	2.0	3.4	0.5	0.0		0	0	3.3	1.9	3.7	6.9
11	7.7	11.0	0.0	0.5	ri	0	0	0.0	2.3	5.1	12.5
12	5.0	11.5	3.8	5.5	ri	0	0	0.0	2.2	5.1	10.1
13	7.2	11.5	3.0	0.0		0	0	0.0	5.0	9.7	20.0
14	5.6	7.0	5.0	1.1	ri	0	0	0.0	3.9	9.4	20.7
15	3.1	6.0	0.8	0.1	ri	0	0	0.1	3.7	6.5	13.6
16	0.7	2.0	-1.0	1.0	sl	0	0	0.0	4.0	11.5	17.9
17	-0.3	2.0	-1.4	17.3	sn	10	4	0.0	9.7	18.0	19.9
18	-0.2	1.2	-2.0	10.2	sn	20	4	0.0	8.5	14.1	19.7
19	1.2	2.6	-0.2	15.5	sl	12	4	0.0	5.2	11.0	17.0
20	-0.4	1.0	-1.0	18.7	sl	28	4	0.0	2.7	6.7	11.1
21	-1.6	3.0	-2.0	15.7	sn	46	4	0.0	1.1	2.5	4.4
22	-3.0	1.0	-6.6	0.3	sn	45	4	0.0	2.4	4.5	6.9
23	0.5	1.0	-3.0	0.1	sn	45	4	0.0	1.4	4.0	8.6
24	7.4	11.5	0.6	2.0	sl	0	2	0.0	2.9	8.5	14.0
25	3.8	11.5	1.6	3.9	ri	0	2	0.0	3.7	9.8	17.9
26	-1.4	2.5	-4.0	0.1	sn	0	0	0.0	1.7	6.2	10.6
27	6.6	8.5	-2.4	0.0		0	0	0.1	5.3	6.9	13.7
28	3.5	7.0	3.2	0.0		0	0	0.0	2.8	6.0	10.6
29	1.7	3.5	-0.5	0.0		0	0	0.3	1.6	4.3	9.3
30	1.4	3.7	-0.5	0.0		0	0	0.0	1.4	5.7	9.2

Meðalhiti (°C)	3.0
Frávik frá meðaltali 1961 - 1990 (°C)	0.1
Meðalhámarkshiti (°C)	6.3
Meðallágmarkshiti (°C)	0.0
Úrkomumagn (mm)	94.4
Hlutfall úrkomu af meðaltali 1961-1990 (%)	161.7
Meðalvindhraði (m/s)	3.1
Sólskinsstundir (klst)	15.2

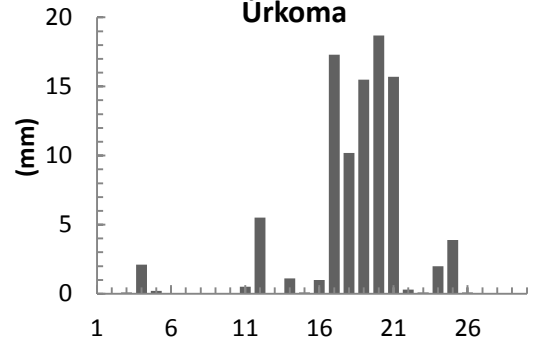
Meðalhiti



Mesti vindur



Úrkoma



Sólskin

