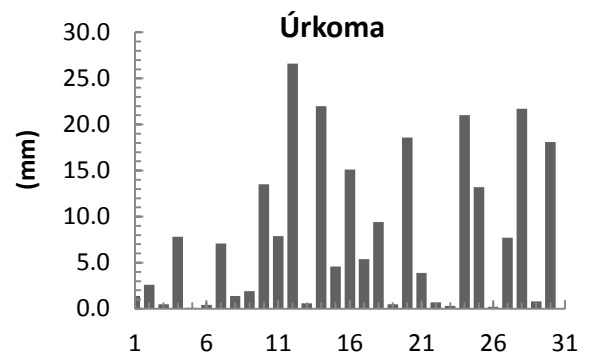
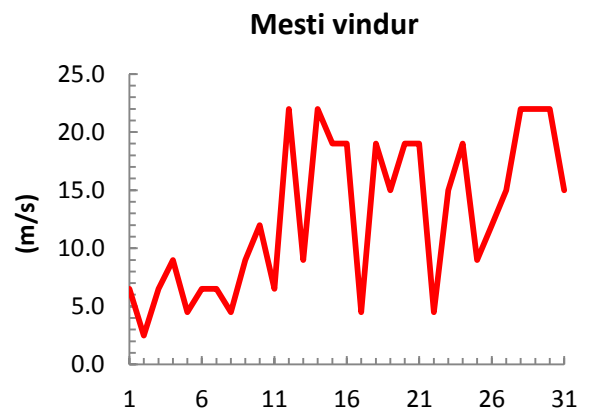
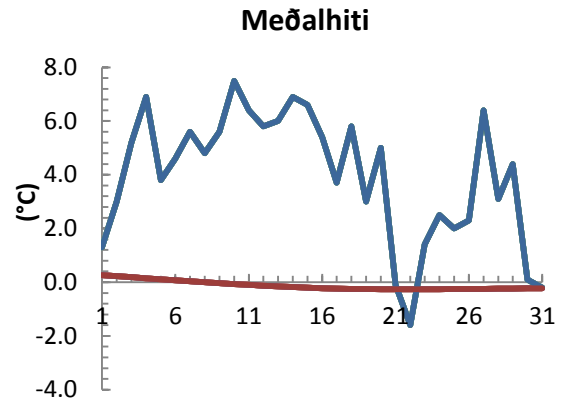


dagur	meðalhiti (°C)	Hámark (°C)	Lágmark (°C)	Úrkoma (mm)	Úrkomutegund	Snjódýpt (cm)	Snjöhula (0-4)	Sólskin (klst)	Meðalvindur (m/s)	Mesti vindur (m/s)	Hviða (m/s)
1	1.3	4.0	0.5	1.4	ri	0	0		2.9	6.5	
2	3.0	4.8	0.4	2.6	sl	0	0		1.5	2.5	
3	5.2	7.2	2.5	0.5	ri	0	0		3.2	6.5	
4	6.9	7.6	6.5	7.8	ri	0	0		5.7	9.0	
5	3.8	7.2	1.3	0.1	ri	0	0		1.3	4.5	
6	4.6	5.6	1.6	0.4	ri	0	0		2.9	6.5	
7	5.6	6.4	4.7	7.1	ri	0	0		2.2	6.5	
8	4.8	5.5	4.3	1.4	ri	0	0		1.8	4.5	
9	5.6	6.5	4.3	1.9	ri	0	0		6.4	9.0	
10	7.5	8.4	5.9	13.5	ri	0	0		7.7	12.0	
11	6.4	7.6	4.9	7.9	ri	0	0		4.1	6.5	
12	5.8	8.0	5.1	26.6	ri	0	0		9.9	22.0	
13	6.0	6.5	4.3	0.6	ri	0	0		5.6	9.0	
14	6.9	8.2	6.1	22.0	ri	0	0		12.0	22.0	
15	6.6	7.6	4.9	4.6	ri	0	0		7.6	19.0	
16	5.4	8.0	4.5	15.1	ri	0	0		12.0	19.0	
17	3.7	6.0	1.5	5.4	ri	0	0		2.1	4.5	
18	5.8	8.4	3.7	9.4	ri	0	0		8.2	19.0	
19	3.0	6.2	0.7	0.5	ri	0	0		11.1	15.0	
20	5.0	8.5	1.9	18.6	sl	0	0		14.0	19.0	
21	-0.1	4.6	-1.3	3.9	sl	0	0		5.6	19.0	
22	-1.6	0.0	-3.6	0.7	sn	2	4		3.1	4.5	
23	1.4	3.5	-3.8	0.3	sl	3	4		8.8	15.0	
24	2.5	3.6	1.1	21.0	ri	0	0		8.6	19.0	
25	2.0	3.5	0.1	13.2	sl	4	4		5.8	9.0	
26	2.3	4.2	0.4	0.2	sl	0	2		4.9	12.0	
27	6.4	8.5	0.1	7.7	sl	0	0		11.4	15.0	
28	3.1	8.6	2.3	21.7	sl	0	0		18.4	22.0	
29	4.4	7.4	2.3	0.8	sl	0	0		14.4	22.0	
30	0.1	6.4	-1.9	18.1	ri	0	0		7.7	22.0	
31	-0.2	0.8	-2.8			0	0		8.9	15.0	



Meðalhiti (°C)	4.0
Frávik frá meðaltali 1961 - 1990 (°C)	4.2
Meðalhámarkshiti (°C)	6.1
Meðallágmarkshiti (°C)	2.0
Úrkomumagn (mm)	235.0
Hlutfall úrkomu af meðaltali 1961-1990 (%)	298.6
Meðalvindhraði (m/s)	7.1



