



Bíldudalur
Map 1, Investigated area

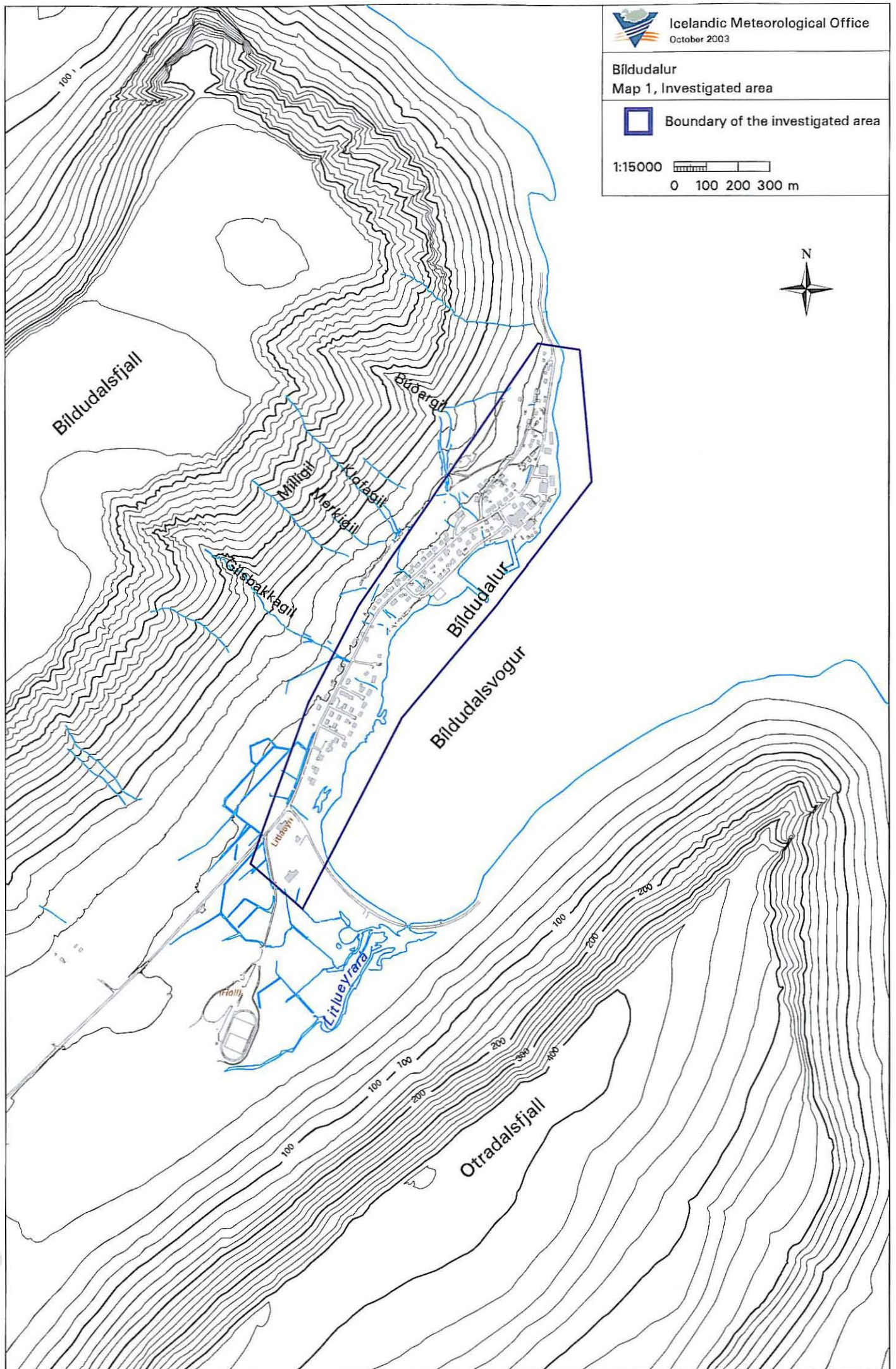


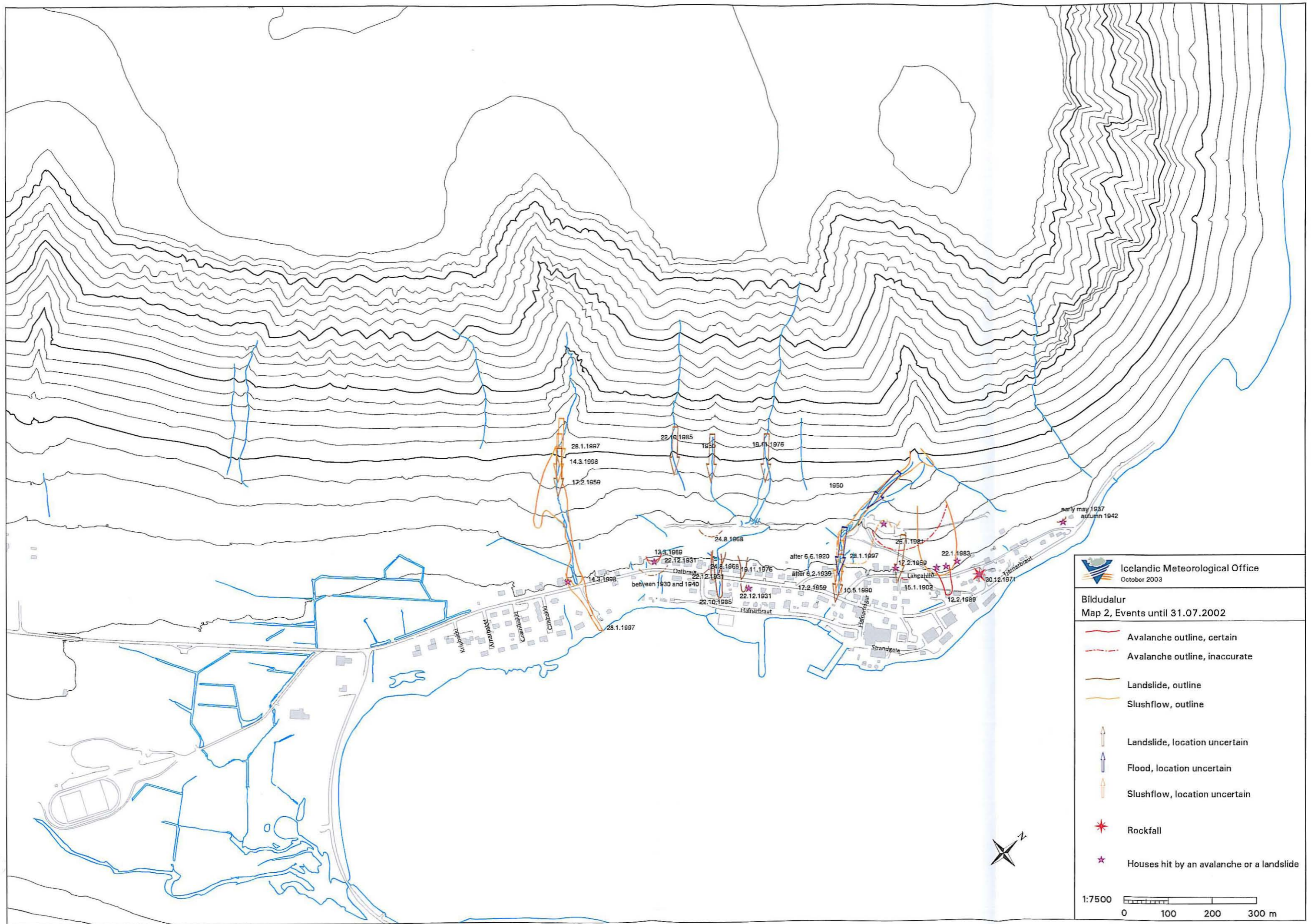
Boundary of the investigated area

1:15000



0 100 200 300 m



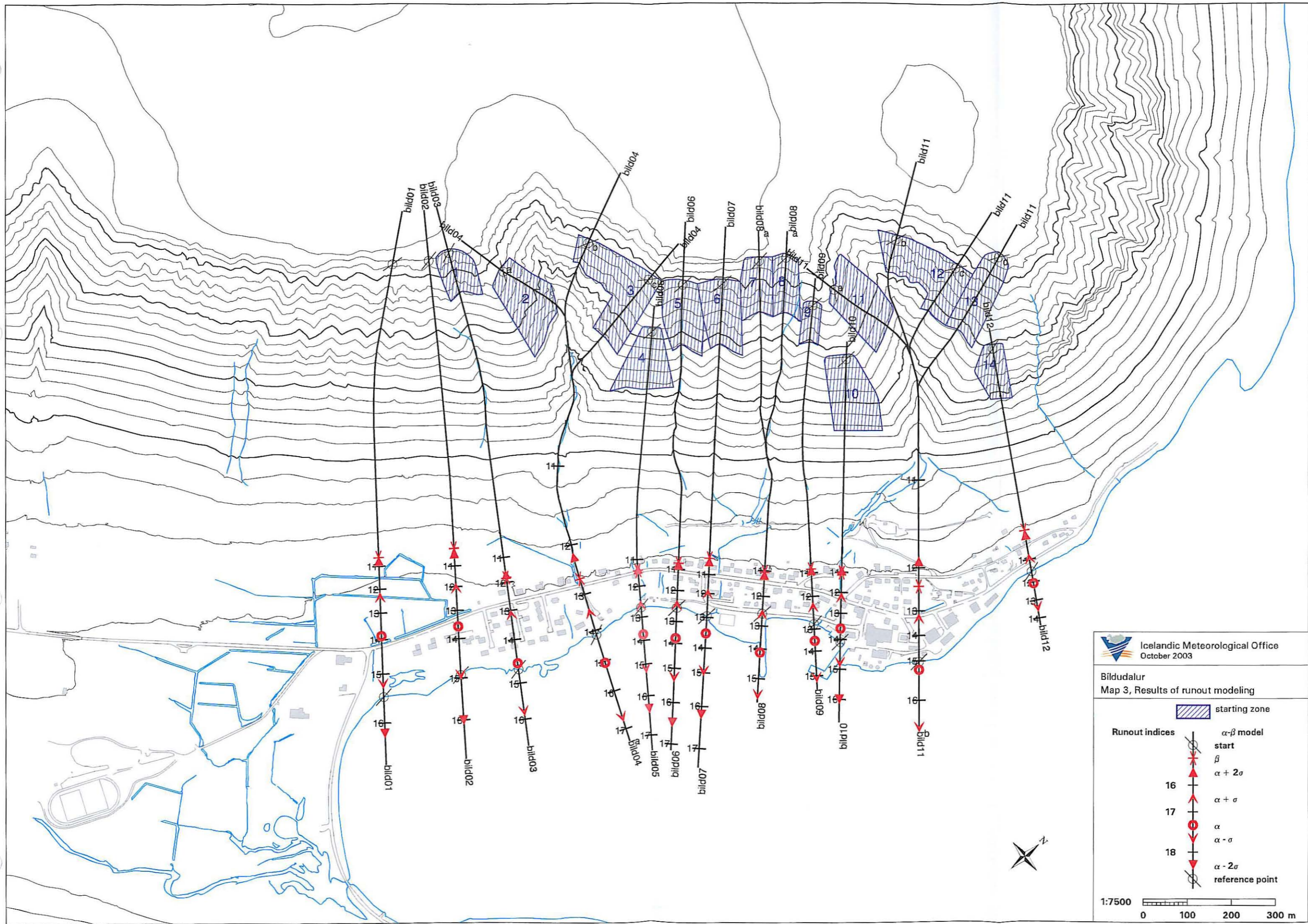


Icelandic Meteorological Office
October 2003

Bíldudalur
Map 2, Events until 31.07.2002

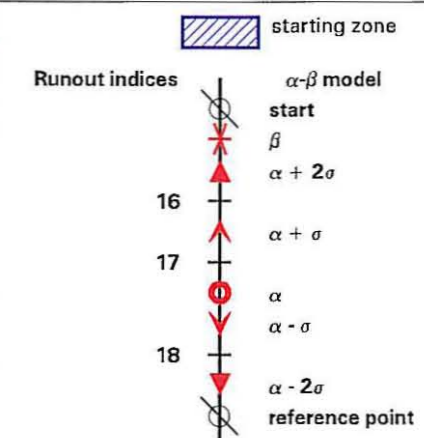
- Avalanche outline, certain
- Avalanche outline, inaccurate
- Landslide, outline
- Slushflow, outline
- Landslide, location uncertain
- Flood, location uncertain
- Slushflow, location uncertain
- Rockfall
- Houses hit by an avalanche or a landslide

1:7500

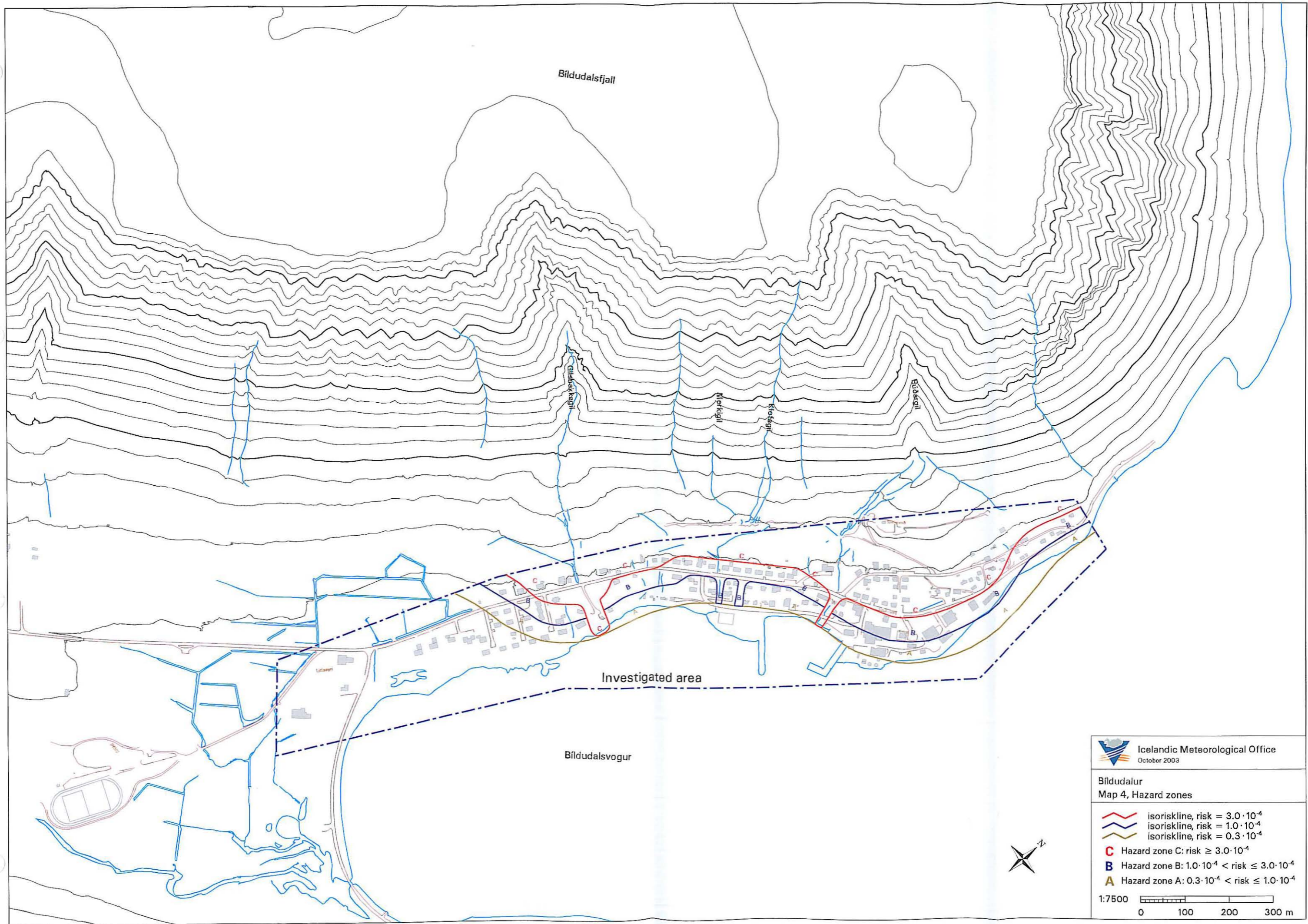


Icelandic Meteorological Office
October 2003

Bíldudalur
Map 3, Results of runout modeling



1:7500
0 100 200 300 m



Bíldudalsfjall

Gindakvegur

Mofkígill


Kofkígill

Búðardal




Investigated area

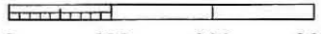
Bíldudalsvogur

Litaeyri

 Icelandic Meteorological Office
October 2003

Bíldudalur
Map 4, Hazard zones

-  isoriskline, risk = $3.0 \cdot 10^{-4}$
-  isoriskline, risk = $1.0 \cdot 10^{-4}$
-  isoriskline, risk = $0.3 \cdot 10^{-4}$
- C** Hazard zone C: risk $\geq 3.0 \cdot 10^{-4}$
- B** Hazard zone B: $1.0 \cdot 10^{-4} < \text{risk} \leq 3.0 \cdot 10^{-4}$
- A** Hazard zone A: $0.3 \cdot 10^{-4} < \text{risk} \leq 1.0 \cdot 10^{-4}$

1:7500 
0 100 200 300 m

