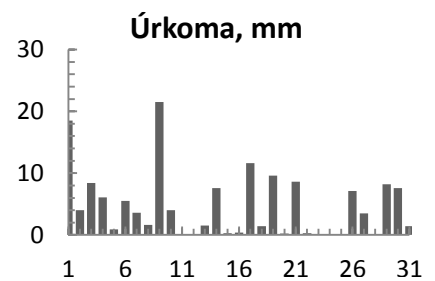
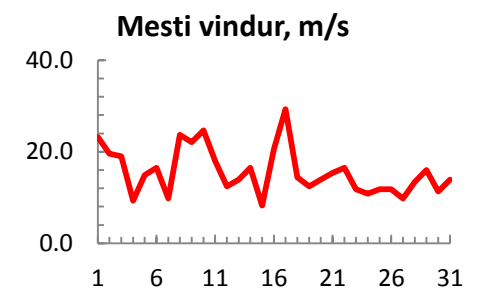
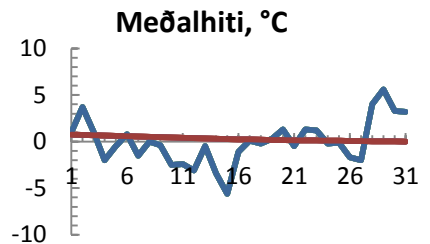


dagur	meðalhiti (°C)	Hámark (°C)	Lágmark (°C)	Úrkoma (mm)	Úrkomutegund	Snjódýpt (cm)	Snjöhula (0-4)	Sólskin (klst)	Meðalvindur (m/s)	Mesti vindur (m/s)	Hviða (m/s)
1	1.0	6.9	-1.2	18.5	sl	0	0	0	12.2	23.2	29.9
2	3.7	6.3	-0.1	4.0	sl	0	0	0	13.6	19.6	30.4
3	1.1	3.6	-0.6	8.4	sl	0	2	0	7.8	19.0	22.7
4	-2.0	1.9	-6.4	6.1	sl	16	4	0	3.8	9.3	11.8
5	-0.5	2.2	-5.0	0.9	sn	15	4	0	6.8	14.9	20.6
6	0.8	4.0	0.1	5.5	sl	0	2	0	7.9	16.5	20.1
7	-1.5	0.5	-2.0	3.6	sn	0	2	0	4.3	9.8	11.8
8	0.0	2.6	-4.3	1.6	sn	11	4	0	10.3	23.7	32.4
9	-0.4	3.3	-2.4	21.5	sl	0	2	0	9.3	22.1	29.9
10	-2.5	0.4	-3.3	4.0	sn	0	2	0	16.8	24.7	29.3
11	-2.4	-1.4	-5.4	0.1	sn	0	2	0	13.7	18.0	21.6
12	-3.1	0.6	-6.5			0	2	0	6.0	12.4	16.0
13	-0.5	2.2	-2.9	1.5	sn	6	4	0	5.6	13.9	19.0
14	-3.4	1.7	-4.4	7.6	sn	10	4	0	10.1	16.5	20.6
15	-5.6	-4.1	-7.6	0.3	sn	11	4	0	5.1	8.2	10.3
16	-1.1	4.2	-7.3	0.4	sn	12	4	0	12.0	20.6	27.8
17	0.1	2.9	-1.6	11.6	sl	10	4	0	16.4	29.3	32.4
18	-0.2	1.5	-1.5	1.4	sn	15	4	0	7.0	14.4	16.5
19	0.3	1.7	-2.3	9.6	sn	17	4	0	5.9	12.4	15.4
20	1.3	4.8	-4.1	0.2	sn	15	4	0	8.3	13.9	20.6
21	-0.5	4.5	-3.3	8.6	sl	13	4	0	7.0	15.4	19.0
22	1.3	2.7	-2.8	0.3	sl	13	4	0	7.5	16.5	19.6
23	1.2	2.4	0.0			13	4	0	7.4	11.8	14.9
24	-0.2	1.2	-1.3			12	4	0	5.0	10.8	13.4
25	-0.1	1.4	-2.4	0.0		12	4	0	5.3	11.8	13.9
26	-1.7	2.4	-4.0	7.1	sn	20	4	0	6.9	11.8	14.9
27	-2.0	-1.4	-4.2	3.5	sn	21	4	0	5.8	9.8	12.4
28	4.0	4.7	-2.1			18	4	0	9.6	13.4	18.0
29	5.6	7.8	4.3	8.2	ri	0	2	0	11.5	16.0	21.1
30	3.3	5.0	2.1	7.6	sl	0	2	0	5.7	11.3	16.0
31	3.2	6.7	1.5	1.4	ri	0	2	0	6.8	13.9	18.5



Meðalhiti (°C)	0.0
Frávik frá meðaltali 1961 - 1990 (°C)	-0.3
Meðalhámarkshiti (°C)	2.7
Meðallágmarkshiti (°C)	-2.6
Úrkomumagn (mm)	143.5
Hlutfall úrkomu af meðaltali 1961-1990 (%)	131.9
Meðalvindhraði (m/s)	8.4