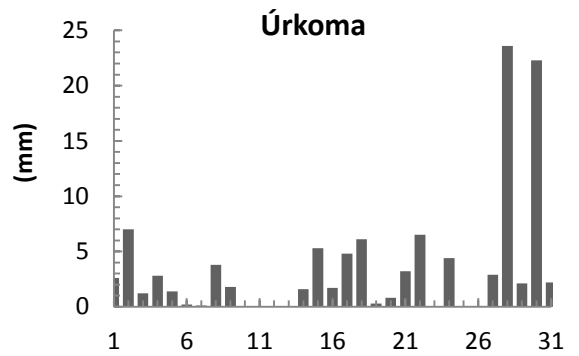
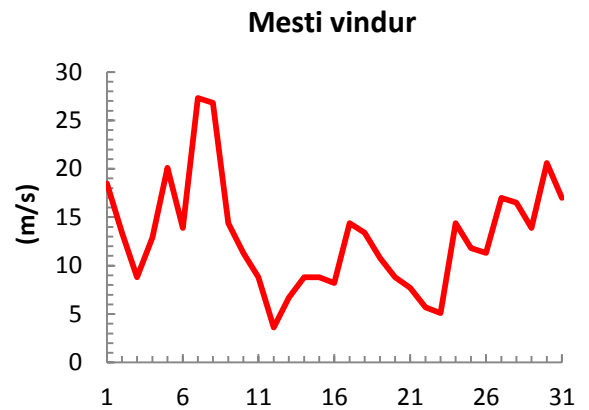
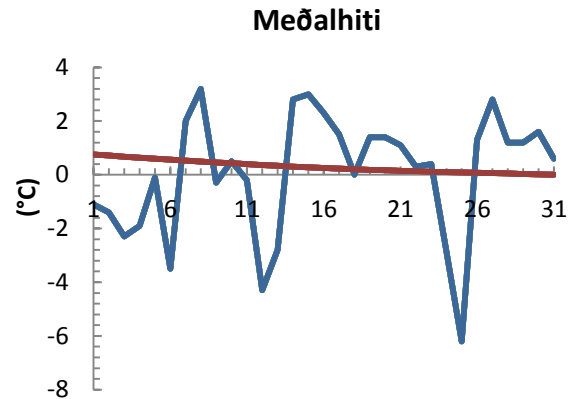


dagur	meðalhiti (°C)	Hámark (°C)	Lágmark (°C)	Úrkoma (mm)	Úrkomutegund	Snjódýpt (cm)	Snjóhula (0-4)	Sólskin (klst)	Meðalvindur (m/s)	Mesti vindur (m/s)	Hviða (m/s)
1	-1.1	2.3	-4.5	2.6	sn	8	4		8.0	18.5	25.2
2	-1.4	1.5	-5.0	7.0	sl	17	4		4.7	13.4	16.5
3	-2.3	0.0	-3.6	1.2	sn	17	4		3.4	8.8	12.4
4	-1.9	-0.4	-4.7	2.8	sn	21	4		8.2	12.9	16.0
5	-0.1	1.7	-1.1	1.4	sl	12	4		15.1	20.1	25.2
6	-3.5	-0.2	-5.6	0.2	sn	9	4		5.2	13.9	17.5
7	2.0	3.5	-6.0	0.1	ri	9	4		13.6	27.3	33.5
8	3.2	4.9	1.5	3.8	ri	0	0		12.2	26.8	29.3
9	-0.3	3.1	-2.2	1.8	sl	0	2		4.2	14.4	17.5
10	0.5	1.5	-0.3	0.0		0	0		7.2	11.3	15.4
11	-0.2	1.4	-0.7	0.0		0	0		5.4	8.8	11.3
12	-4.3	0.0	-5.9	0.0		0	0		1.2	3.6	4.1
13	-2.8	-1.5	-4.7	0.0		0	0		4.4	6.7	9.3
14	2.8	4.4	-2.6	1.6	sl	0	2		6.4	8.8	12.4
15	3.0	4.5	2.6	5.3	ri	0	2		5.1	8.8	10.8
16	2.3	3.6	2.0	1.7	ri	0	2		3.9	8.2	15.4
17	1.5	3.6	0.5	4.8	sl	0	0		10.2	14.4	18.0
18	0.0	2.3	-2.0	6.1	ri	0	0		6.9	13.4	16.0
19	1.4	2.7	0.2	0.3	ri	0	0		6.9	10.8	15.4
20	1.4	2.3	0.7	0.8	ri	0	0		5.0	8.8	11.3
21	1.1	2.5	0.5	3.2	sl	0	0		5.9	7.7	9.3
22	0.3	1.3	-1.0	6.5	sl	5	4		2.0	5.7	7.2
23	0.4	2.2	-0.4	0.0		0	2		3.2	5.1	6.7
24	-2.9	0.7	-3.7	4.4	sn	10	4		10.2	14.4	18.5
25	-6.2	-3.5	-8.3	0.0		9	4		5.5	11.8	14.9
26	1.3	2.7	-6.3	0.0		9	4		7.1	11.3	14.9
27	2.8	4.8	1.8	2.9	ri	6	4		7.7	17.0	25.7
28	1.2	7.1	0.0	23.6	sl	0	2		4.6	16.5	22.7
29	1.2	2.9	-0.6	2.1	sl	3	4		7.2	13.9	19.0
30	1.6	2.8	0.3	22.3	sl	6	4		11.1	20.6	26.3
31	0.6	2.6	-1.5	2.2	sl	6	4		9.7	17.0	22.1



Meðalhiti (°C)	0.1
Frávik frá meðaltali 1961 - 1990 (°C)	-0.2
Meðalhámarkshiti (°C)	2.2
Meðallágmarkshiti (°C)	-2.0
Úrkomumagn (mm)	108.7
Hlutfall úrkomu af meðaltali 1961-1990 (%)	99.9
Meðalvindhraði (m/s)	6.8