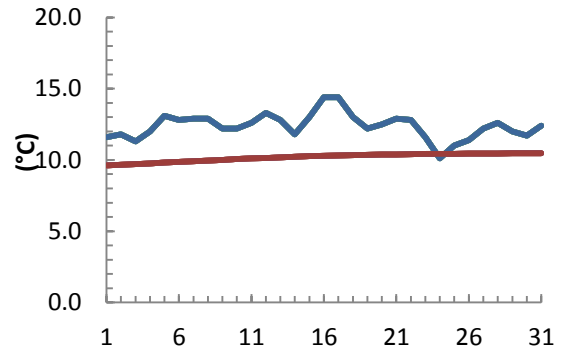


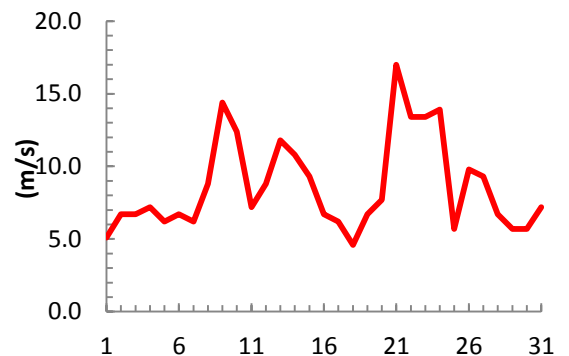
dagur	meðalhiti (°C)	Hámark (°C)	Lágmark (°C)	Úrkoma (mm)	Úrkomutegund	Snjódýpt (cm)	Snjóhula (0-4)	Sólskin (klst)	Meðalvindur (m/s)	Mesti vindur (m/s)	Hviða (m/s)
1	11.6	15.1	7.6			0	0		3.4	5.1	6.2
2	11.8	14.3	9.2	2.7	ri	0	0		3.9	6.7	9.3
3	11.3	14.4	9.8	0.0		0	0		3.9	6.7	9.8
4	12.0	14.7	7.8	0.3	ri	0	0		4.5	7.2	9.8
5	13.1	15.9	11.3			0	0		3.7	6.2	9.3
6	12.8	15.3	10.9			0	0		4.4	6.7	8.8
7	12.9	15.3	11.5	0.6	ri	0	0		4.4	6.2	7.7
8	12.9	15.3	11.7			0	0		5.2	8.8	11.3
9	12.2	15.4	10.7	1.6	ri	0	0		9.3	14.4	18.0
10	12.2	16.1	7.1			0	0		7.2	12.4	16.5
11	12.6	16.1	9.3			0	0		3.8	7.2	10.3
12	13.3	17.3	9.0			0	0		5.0	8.8	10.8
13	12.8	15.5	10.3			0	0		7.7	11.8	16.5
14	11.8	14.6	11.3			0	0		7.3	10.8	13.9
15	13.0	16.3	9.1	0.4	ri	0	0		4.9	9.3	12.4
16	14.4	18.5	9.4			0	0		2.8	6.7	9.3
17	14.4	18.1	10.7			0	0		3.9	6.2	9.3
18	13.0	17.8	11.2			0	0		2.8	4.6	5.7
19	12.2	14.5	10.8	4.2	ri	0	0		3.5	6.7	8.8
20	12.5	14.5	10.8	0.0		0	0		4.2	7.7	9.3
21	12.9	14.9	10.8			0	0		8.6	17.0	22.1
22	12.8	14.4	11.8	6.6	ri	0	0		6.0	13.4	18.5
23	11.6	14.0	10.9	8.4	ri	0	0		8.8	13.4	16.5
24	10.1	12.8	7.9			0	0		10.3	13.9	16.5
25	11.0	12.7	9.6	1.0	ri	0	0		3.6	5.7	7.7
26	11.4	14.6	7.0	2.0	ri	0	0		5.5	9.8	11.8
27	12.2	16.8	8.3			0	0		6.7	9.3	11.8
28	12.6	16.5	7.8			0	0		4.2	6.7	9.8
29	12.0	14.0	11.1	0.8	ri	0	0		3.5	5.7	6.2
30	11.7	12.9	11.4	0.6	ri	0	0		3.7	5.7	7.7
31	12.4	16.5	8.3	1.8	ri	0	0		4.0	7.2	9.3

Meðalhiti (°C)	12.4
Frávik frá meðaltali 1961 - 1990 (°C)	2.2
Meðalhámarkshiti (°C)	15.3
Meðallágmarkshiti (°C)	9.8
Úrkomumagn (mm)	31.0
Hlutfall úrkomu af meðaltali 1961-1990 (%)	47.3
Meðalvindhraði (m/s)	5.2

Meðalhiti



Mesti vindur



Úrkoma

