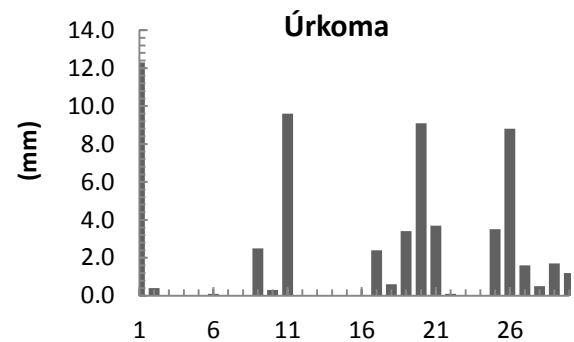
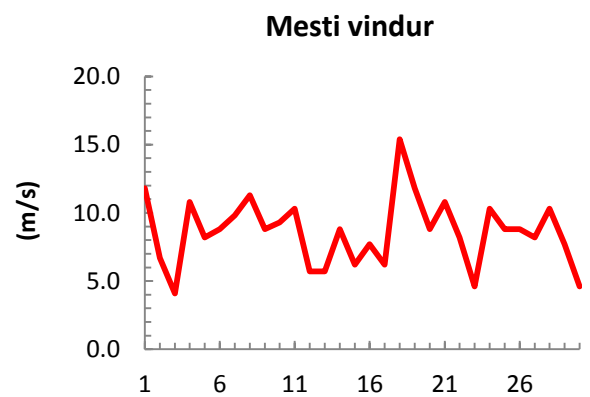
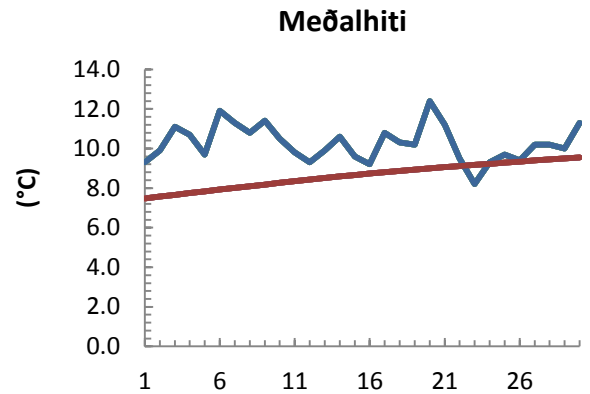


dagur	meðalhiti (°C)	Hámark (°C)	Lágmark (°C)	Úrkoma (mm)	Úrkomutegund	Snjódýpt (cm)	Snjóhúla (0-4)	Sólskin (klst)	Meðalvindur (m/s)	Mesti vindur (m/s)	Hviða (m/s)
1	9.3	10.6	8.4	12.3	ri	0	0		5.6	11.8	16.0
2	9.9	13.6	8.5	0.4	ri	0	0		3.9	6.7	8.2
3	11.1	16.9	4.5	0.0		0	0		2.5	4.1	8.2
4	10.7	16.3	7.3			0	0		4.6	10.8	13.9
5	9.7	11.7	8.2	0.0		0	0		5.5	8.2	10.8
6	11.9	15.4	8.5	0.1	ri	0	0		4.8	8.8	11.3
7	11.3	15.4	8.8			0	0		4.8	9.8	12.9
8	10.8	14.0	8.8			0	0		6.6	11.3	13.4
9	11.4	12.7	10.1	2.5	ri	0	0		4.9	8.8	11.8
10	10.5	12.5	10.0	0.3	ri	0	0		6.2	9.3	12.4
11	9.8	11.7	8.7	9.6	ri	0	0		7.3	10.3	13.9
12	9.3	11.6	7.9	0.0		0	0		3.2	5.7	7.2
13	9.9	13.0	8.6	0.0		0	0		3.4	5.7	7.7
14	10.6	14.4	6.9			0	0		4.4	8.8	10.3
15	9.6	12.6	7.3			0	0		3.8	6.2	8.8
16	9.2	10.9	7.9	0.0		0	0		5.4	7.7	10.3
17	10.8	13.5	8.5	2.4	ri	0	0		3.9	6.2	8.2
18	10.3	13.4	9.6	0.6	ri	0	0		11.0	15.4	22.1
19	10.2	12.3	9.2	3.4	ri	0	0		5.3	11.8	16.0
20	12.4	16.1	10.1	9.1	ri	0	0		4.6	8.8	10.3
21	11.2	14.5	9.7	3.7	ri	0	0		7.2	10.8	14.4
22	9.5	13.1	7.7	0.1	ri	0	0		4.4	8.2	9.8
23	8.2	10.3	6.8			0	0		3.0	4.6	6.2
24	9.3	10.3	8.2	0.0		0	0		6.8	10.3	13.9
25	9.7	11.2	9.0	3.5	ri	0	0		4.6	8.8	11.8
26	9.4	11.0	9.0	8.8	ri	0	0		5.4	8.8	11.8
27	10.2	12.8	7.8	1.6	ri	0	0		4.2	8.2	10.3
28	10.2	14.5	8.8	0.5	ri	0	0		6.3	10.3	13.9
29	10.0	13.1	6.5	1.7	ri	0	0		4.4	7.7	10.3
30	11.3	15.0	7.6	1.2	ri	0	0		2.5	4.6	6.7



Meðalhiti (°C)	10.3
Frávik frá meðaltali 1961 - 1990 (°C)	1.6
Meðalhámarkshiti (°C)	13.2
Meðallágmarkshiti (°C)	8.3
Úrkomumagn (mm)	61.8
Hlutfall úrkomu af meðaltali 1961-1990 (%)	91.0
Meðalvindhraði (m/s)	5.0