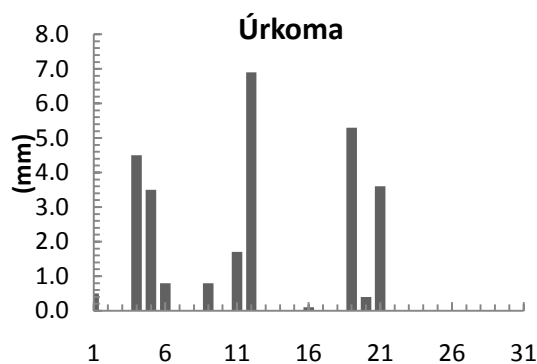
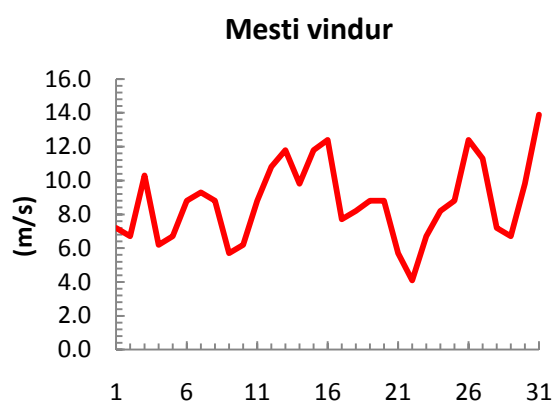
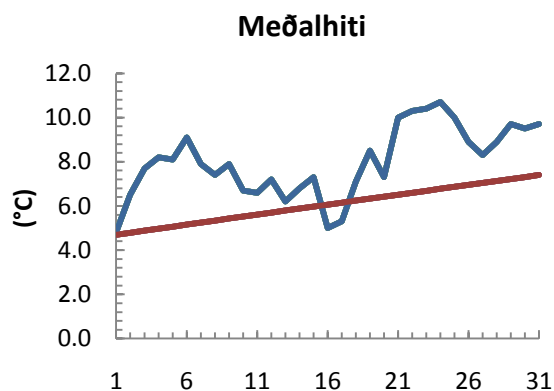


dagur	meðalhiti (°C)	Hámark (°C)	Lágmark (°C)	Úrkoma (mm)	Úrkomutegund	Snjódýpt (cm)	Snjöhula (0-4)	Sólskin (klst)	Meðalvindur (m/s)	Mesti vindur (m/s)	Hviða (m/s)
1	4.8	7.5	2.5	0.5	ri	0	0	0.0	5.1	7.2	9.8
2	6.5	7.6	3.3			0	0	0.0	4.2	6.7	8.2
3	7.7	8.9	6.1			0	0	0.0	6.5	10.3	13.9
4	8.2	11.9	5.7	4.5	ri	0	0	0.0	3.2	6.2	7.2
5	8.1	11.5	7.3	3.5	ri	0	0	0.0	4.2	6.7	8.2
6	9.1	11.6	7.5	0.8	ri	0	0	0.0	5.3	8.8	11.3
7	7.9	11.2	6.6			0	0	0.0	5.8	9.3	12.4
8	7.4	9.3	5.7			0	0	0.0	5.7	8.8	11.8
9	7.9	11.4	5.4	0.8	ri	0	0	0.0	3.2	5.7	7.7
10	6.7	10.0	4.7			0	0	0.0	3.4	6.2	7.2
11	6.6	8.6	3.2	1.7	ri	0	0	0.0	4.4	8.8	12.9
12	7.2	9.5	6.2	6.9	ri	0	0	0.0	8.2	10.8	13.4
13	6.2	11.5	3.2	0.0		0	0	0.0	7.9	11.8	14.4
14	6.8	11.0	3.0			0	0	0.0	6.2	9.8	11.3
15	7.3	10.6	6.1	0.0		0	0	0.0	8.8	11.8	14.9
16	5.0	9.5	2.9	0.1	ri	0	0	0.0	9.4	12.4	15.4
17	5.3	9.0	1.6	0.0		0	0	0.0	4.2	7.7	10.3
18	7.1	10.5	2.0	0.0		0	0	0.0	4.7	8.2	11.8
19	8.5	11.3	7.4	5.3	ri	0	0	0.0	5.5	8.8	10.3
20	7.3	9.0	4.3	0.4	ri	0	0	0.0	4.4	8.8	11.3
21	10.0	12.0	8.4	3.6	ri	0	0	0.0	2.2	5.7	7.2
22	10.3	13.7	3.6			0	0	0.0	1.8	4.1	5.7
23	10.4	15.0	6.6			0	0	0.0	3.9	6.7	8.2
24	10.7	15.4	6.4			0	0	0.0	4.0	8.2	9.3
25	10.0	14.2	7.4			0	0	0.0	4.3	8.8	10.8
26	8.9	12.7	4.4			0	0	0.0	6.6	12.4	15.4
27	8.3	12.6	5.2			0	0	0.0	7.3	11.3	13.9
28	8.9	12.1	5.5			0	0	0.0	3.2	7.2	8.8
29	9.7	12.3	7.4			0	0	0.0	3.9	6.7	9.3
30	9.5	13.0	4.9			0	0	0.0	3.5	9.8	13.4
31	9.7	12.9	8.5			0	0	0.0	9.5	13.9	19.0



Meðalhiti (°C)	8.0
Frávik frá meðaltali 1961 - 1990 (°C)	1.9
Meðalhámarkshiti (°C)	11.2
Meðallágmarkshiti (°C)	5.3
Úrkomumagn (mm)	28.1
Hlutfall úrkomu af meðaltali 1961-1990 (%)	42.9
Meðalvindhraði (m/s)	5.2

