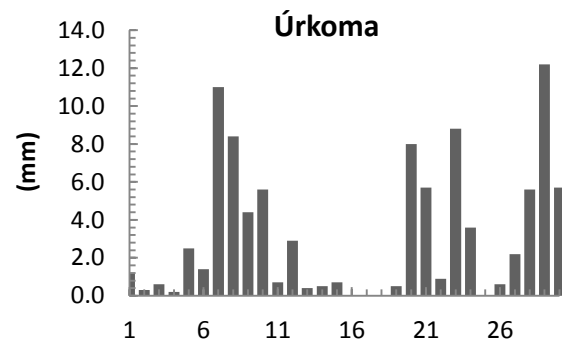
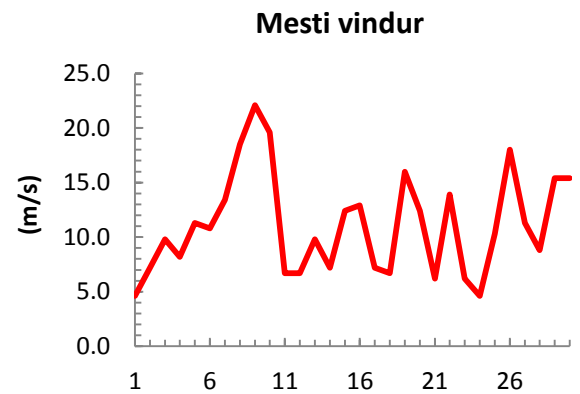
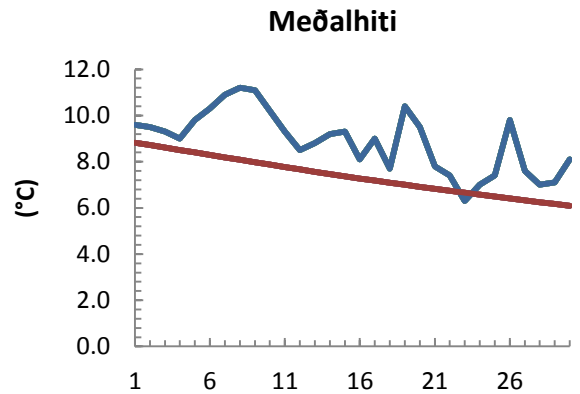


dagur	meðalhiti (°C)	Hámark (°C)	Lágmark (°C)	Úrkoma (mm)	Úrkomutegund	Snjódýpt (cm)	Snjóhúla (0-4)	Sólskin (klst)	Meðalvindur (m/s)	Mesti vindur (m/s)	Hviða (m/s)
1	9.6	11.6	7.6	1.2	ri	0	0		1.7	4.6	5.7
2	9.5	11.3	8.0	0.3	ri	0	0		3.7	7.2	8.8
3	9.3	11.3	9.0	0.6	ri	0	0		7.3	9.8	12.4
4	9.0	11.7	6.7	0.2	ri	0	0		4.3	8.2	11.3
5	9.8	10.8	9.1	2.5	ri	0	0		8.5	11.3	14.4
6	10.3	11.8	8.7	1.4	ri	0	0		7.6	10.8	14.4
7	10.9	11.6	10.4	11.0	ri	0	0		10.8	13.4	17.5
8	11.2	11.7	11.0	8.4	ri	0	0		13.0	18.5	28.3
9	11.1	12.4	10.1	4.4	ri	0	0		12.6	22.1	30.9
10	10.2	11.6	9.1	5.6	ri	0	0		11.8	19.6	26.8
11	9.3	11.6	8.7	0.7	ri	0	0		4.9	6.7	9.3
12	8.5	11.8	6.3	2.9	ri	0	0		2.9	6.7	9.8
13	8.8	11.7	6.4	0.4	ri	0	0		5.3	9.8	13.4
14	9.2	11.5	7.1	0.5	ri	0	0		2.6	7.2	8.8
15	9.3	12.0	8.2	0.7	ri	0	0		9.7	12.4	16.0
16	8.1	10.5	6.9			0	0		9.0	12.9	17.0
17	9.0	11.5	6.7			0	0		5.2	7.2	8.8
18	7.7	11.1	6.2	0.0		0	0		3.7	6.7	8.8
19	10.4	11.3	7.1	0.5	ri	0	0		12.2	16.0	22.7
20	9.5	11.5	9.0	8.0	ri	0	0		8.0	12.4	16.0
21	7.8	11.0	4.9	5.7	ri	0	0		3.5	6.2	9.3
22	7.4	11.2	5.5	0.9	ri	0	0		6.8	13.9	19.0
23	6.3	9.1	4.4	8.8	ri	0	0		3.3	6.2	8.2
24	7.0	9.4	5.5	3.6	ri	0	0		2.8	4.6	6.2
25	7.4	9.2	4.4	0.0		0	0		5.5	10.3	13.9
26	9.8	11.8	8.5	0.6	ri	0	0		12.6	18.0	26.8
27	7.6	11.0	5.6	2.2	ri	0	0		6.6	11.3	15.4
28	7.0	9.3	6.0	5.6	ri	0	0		5.0	8.8	12.4
29	7.1	9.4	5.4	12.2	ri	0	0		9.9	15.4	20.1
30	8.1	9.3	6.5	5.7	ri	0	0		8.4	15.4	20.6



Meðalhiti (°C)	8.9
Frávik frá meðaltali 1961 - 1990 (°C)	1.5
Meðalhámarkshiti (°C)	11.0
Meðallágmarkshiti (°C)	7.3
Úrkomumagn (mm)	94.6
Hlutfall úrkomu af meðaltali 1961-1990 (%)	106.5
Meðalvindhraði (m/s)	7.0



